

For Research Use Only

EPG5 Polyclonal antibody

Catalog Number: 27666-1-AP



Basic Information

Catalog Number: 27666-1-AP	GenBank Accession Number: BC130614	Purification Method: Antigen affinity purification
Size: 150ul , Concentration: 400 µg/ml by Nanodrop;	GeneID (NCBI): 57724	Recommended Dilutions: WB 1:500-1:1000 IHC 1:50-1:500
Source: Rabbit	Full Name: KIAA1632	
Isotype: IgG	Calculated MW: 2579 aa, 292 kDa	
Immunogen Catalog Number: AG24801	Observed MW: 270-290 kDa	

Applications

Tested Applications: IHC, WB, ELISA	Positive Controls:
Species Specificity: Human, mouse	WB : HEK-293 cells, HeLa cells IHC : human kidney tissue,

Note-IHC: suggested antigen retrieval with TE buffer pH 9.0; (*) Alternatively, antigen retrieval may be performed with citrate buffer pH 6.0

Background Information

EPG5, a metazoan-specific autophagy protein, regulates autophagy by promoting fusion of autophagosomes with lysosomes and/or late endosomes. EPG5 regulates the stability and the assembly of STX17-SNAP29-VAMP8 trans-SNARE complexes. Loss of function of EPG5 causes non-specific fusion of autophagosomes with other endocytic vesicles, resulting in formation of non-degradative enlarged vesicles. EPG5 expression in human pluripotent stem cells like ESC and iPSC is higher than that of human somatic cells.(PMID: 30931944, PMID: 27588602)

Storage

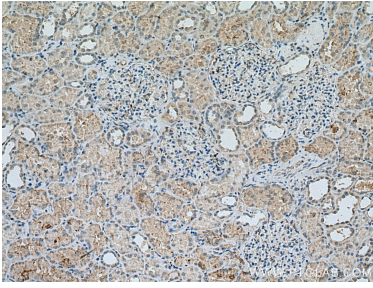
Storage:
Store at -20°C. Stable for one year after shipment.
Storage Buffer:
PBS with 0.02% sodium azide and 50% glycerol pH 7.3.
Aliquoting is unnecessary for -20°C storage

*** 20ul sizes contain 0.1% BSA

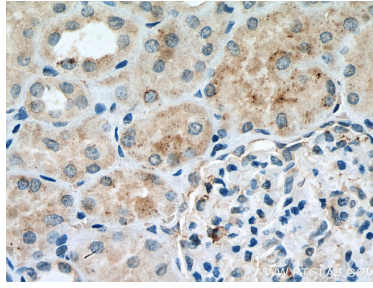
For technical support and original validation data for this product please contact:
T: 1 (888) 4PTGLAB (1-888-478-4522) (toll free in USA), or 1(312) 455-8498 (outside USA)
E: proteintech@ptglab.com
W: ptglab.com

This product is exclusively available under Proteintech Group brand and is not available to purchase from any other manufacturer.

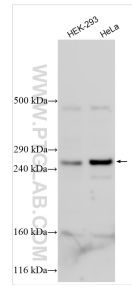
Selected Validation Data



Immunohistochemical analysis of paraffin-embedded human kidney tissue slide using 27666-1-AP (KIAA1632 antibody) at dilution of 1:200 (under 10x lens). Heat mediated antigen retrieved with Sodium Citrate buffer (pH 6.0).



Immunohistochemical analysis of paraffin-embedded human kidney tissue slide using 27666-1-AP (KIAA1632 antibody) at dilution of 1:200 (under 40x lens). Heat mediated antigen retrieved with Sodium Citrate buffer (pH 6.0).



Various lysates were subjected to SDS PAGE followed by western blot with 27666-1-AP (EPC5 antibody) at dilution of 1:600 incubated at room temperature for 1.5 hours.