

For Research Use Only

# EPG5 Polyclonal antibody, PBS Only

Catalog Number: 27666-1-PBS



## Basic Information

<b>Catalog Number:</b> 27666-1-PBS	<b>GenBank Accession Number:</b> BC130614	<b>Purification Method:</b> Antigen affinity purification
<b>Size:</b> 100ug , Concentration: 1 mg/ml by Nanodrop;	<b>GeneID (NCBI):</b> 57724	
<b>Source:</b> Rabbit	<b>UNIPROT ID:</b> Q9HCEO	
<b>Isotype:</b> IgG	<b>Full Name:</b> KIAA1632	
<b>Immunogen Catalog Number:</b> AG24801	<b>Calculated MW:</b> 2579 aa, 292 kDa	
	<b>Observed MW:</b> 270-290 kDa	

## Applications

**Tested Applications:**  
WB, IHC, Indirect ELISA

**Species Specificity:**  
human, mouse

## Background Information

EPG5, a metazoan-specific autophagy protein, regulates autophagy by promoting fusion of autophagosomes with lysosomes and/or late endosomes. EPG5 regulates the stability and the assembly of STX17-SNAP29-VAMP8 trans-SNARE complexes. Loss of function of EPG5 causes non-specific fusion of autophagosomes with other endocytic vesicles, resulting in formation of non-degradative enlarged vesicles. EPG5 expression in human pluripotent stem cells like ESC and iPSC is higher than that of human somatic cells.(PMID: 30931944, PMID: 27588602)

## Storage

**Storage:**  
Store at -80°C.

**Storage Buffer:**  
PBS only, pH7.3

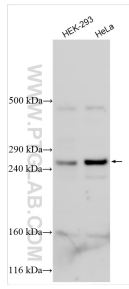
For technical support and original validation data for this product please contact:

T: 1 (888) 4PTGLAB (1-888-478-4522) (toll free in USA), or 1(312) 455-8498 (outside USA)

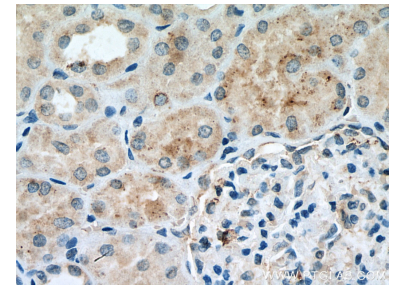
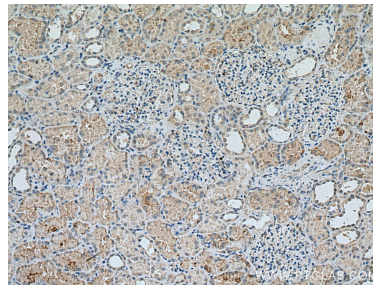
E: [proteintech@ptglab.com](mailto:proteintech@ptglab.com)  
W: [ptglab.com](http://ptglab.com)

**This product is exclusively available under Proteintech Group brand and is not available to purchase from any other manufacturer.**

## Selected Validation Data



Various lysates were subjected to Tris-Acetate gel system followed by western blot with 27666-1-AP (EPG5 antibody) at dilution of 1:600 incubated at room temperature for 1.5 hours. This data was developed using the same antibody clone with 27666-1-PBS in a different storage buffer formulation.



Immunohistochemical analysis of paraffin-embedded human lung cancer tissue slide using 27666-1-AP (EPG5 antibody) at dilution of 1:200 (under 40x lens). Heat mediated antigen retrieval with Tris-EDTA buffer (pH 9.0). This data was developed using the same antibody clone with 27666-1-PBS in a different storage buffer formulation.