

For Research Use Only

TM6SF2 Polyclonal antibody, PBS Only

Catalog Number: 27671-1-PBS



Basic Information

Catalog Number: 27671-1-PBS	GenBank Accession Number: NM_001001524	Purification Method: Antigen affinity purification
Size: 100ug, Concentration: 1 mg/ml by Nanodrop;	GeneID (NCBI): 533	
Source: Rabbit	UNIPROT ID: Q9BZW4	
Isotype: IgG	Full Name: transmembrane 6 superfamily member 2	
Immunogen Catalog Number: AG26527	Calculated MW: 43 kDa	
	Observed MW: 43 kDa	

Applications

Tested Applications:
WB, IHC, Indirect ELISA

Species Specificity:
human, mouse, rat

Background Information

TM6SF2 is mainly expressed in the liver, intestine, kidney, and in other tissues at low levels. In terms of subcellular localization, TM6SF2 is localized in the endoplasmic reticulum (ER), the ER-Golgi intermediate compartment, and Golgi of liver cells and enterocytes. The loss of TM6SF2 promotes the release of free fatty acids from IECs, leading to intestinal barrier dysfunction, gut microbiota dysbiosis and metabolite alterations (PMID: 29232562, 27013658). TM6SF2 encodes a protein predicted to have 7-10 transmembrane domains, containing 351 amino acids (39.5-kDa) with an estimated isoelectric point (pI) of 8.29 (PMID: 39779889).

Storage

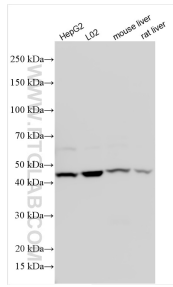
Storage:
Store at -80°C.

Storage Buffer:
PBS only, pH7.3

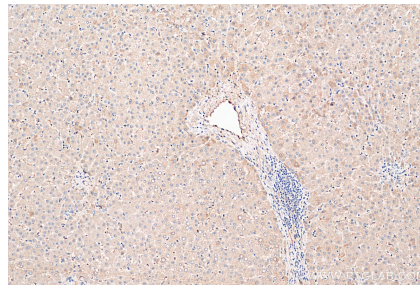
For technical support and original validation data for this product please contact:
T: 1 (888) 4PTGLAB (1-888-478-4522) (toll free in USA), or 1(312) 455-8498 (outside USA) E: proteintech@ptglab.com
W: ptglab.com

This product is exclusively available under Proteintech Group brand and is not available to purchase from any other manufacturer.

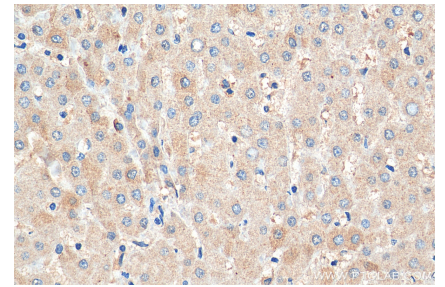
Selected Validation Data



Various lysates were subjected to SDS PAGE followed by western blot with 27671-1-AP (TM6SF2 antibody) at dilution of 1:1000 incubated at room temperature for 1.5 hours. This data was developed using the same antibody clone with 27671-1-PBS in a different storage buffer formulation.



Immunohistochemical analysis of paraffin-embedded human liver tissue slide using 27671-1-AP (TM6SF2 antibody) at dilution of 1:200 (under 10x lens). Heat mediated antigen retrieval with Tris-EDTA buffer (pH 9.0). This data was developed using the same antibody clone with 27671-1-PBS in a different storage buffer formulation.



Immunohistochemical analysis of paraffin-embedded human liver tissue slide using 27671-1-AP (TM6SF2 antibody) at dilution of 1:200 (under 40x lens). Heat mediated antigen retrieval with Tris-EDTA buffer (pH 9.0). This data was developed using the same antibody clone with 27671-1-PBS in a different storage buffer formulation.