

For Research Use Only

SASH1 Polyclonal antibody, PBS Only

Catalog Number: 27689-1-PBS



Basic Information

Catalog Number: 27689-1-PBS	GenBank Accession Number: NML_015278	Purification Method: Antigen affinity purification
Size: 100ug , Concentration: 1 mg/ml by Nanodrop;	GeneID (NCBI): 23328	
Source: Rabbit	UNIPROT ID: O94885	
Isotype: IgG	Full Name: SAM and SH3 domain containing 1	
Immunogen Catalog Number: AG26771	Calculated MW: 137 kDa	
	Observed MW: 170 kDa	

Applications

Tested Applications:
WB, IF/ICC, Indirect ELISA

Species Specificity:
human

Background Information

SAM and SH3 domain-containing protein 1 (SASH1, also known as KIAA0790 and PEPE1) is a multidomain protein implicated in various cellular processes, including cell adhesion, migration, and apoptosis. It has been identified as a novel Eph receptor-binding partner through SAM-SAM domain interactions, which are critical for the recruitment and binding of downstream molecules in the Eph signaling pathway (PMID: 37619706). SASH1 is also known to regulate signaling through focal adhesion kinase (FAK) and AKT/PI3K and promote apoptosis. Mutations in SASH1 have been associated with cancers, and it is suggested as a potential therapeutic target in non-small cell lung cancer (PMID: 33122723).

Storage

Storage:
Store at -80°C.

Storage Buffer:
PBS Only

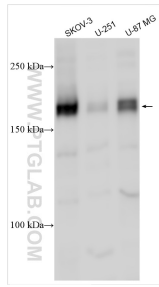
For technical support and original validation data for this product please contact:

T: 1 (888) 4PTGLAB (1-888-478-4522) (toll free in USA), or 1(312) 455-8498 (outside USA)

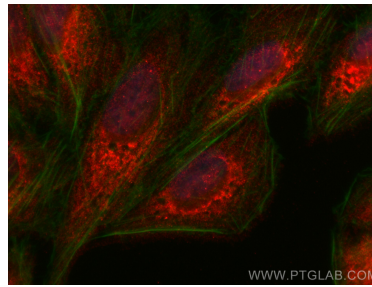
E: proteintech@ptglab.com
W: ptglab.com

This product is exclusively available under Proteintech Group brand and is not available to purchase from any other manufacturer.

Selected Validation Data



Various lysates were subjected to SDS PAGE followed by western blot with 27689-1-AP (SASH1 antibody) at dilution of 1:1000 incubated at room temperature for 1.5 hours. This data was developed using the same antibody clone with 27689-1-PBS in a different storage buffer formulation.



Immunofluorescent analysis of (4% PFA) fixed U2OS cells using SASH1 antibody (27689-1-AP) at dilution of 1:200 and CoraLite®594-Conjugated Goat Anti-Rabbit IgG(H+L) (SA00013-4), CL488-Phalloidin (green). This data was developed using the same antibody clone with 27689-1-PBS in a different storage buffer formulation.