

For Research Use Only

REL Polyclonal antibody

Catalog Number: 27693-1-AP

2 Publications



Basic Information

Catalog Number:

27693-1-AP

Size:

150ul, Concentration: 900 ug/ml by Nanodrop;

Source:

Rabbit

Isotype:

IgG

Immunogen Catalog Number:

AG26776

GenBank Accession Number:

NM_001291746

GeneID (NCBI):

5966

UNIPROT ID:

Q04864

Full Name:

v-rel reticuloendotheliosis viral oncogene homolog (avian)

Calculated MW:

69 kDa

Observed MW:

68-78 kDa

Purification Method:

Antigen affinity purification

Recommended Dilutions:

WB 1:1000-1:4000

Applications

Tested Applications:

WB, ELISA

Cited Applications:

WB

Species Specificity:

Human

Cited Species:

human, mouse

Positive Controls:

WB : Daudi cells,

Background Information

REL, also known as, Proto-oncogene c-Rel, is a 619 amino acid protein, which may play a role in differentiation and lymphopoiesis. NF-kappa-B is a homo- or heterodimeric complex formed by the Rel-like domain-containing proteins RELA/p65, RELB, NFkB1/p105, NFkB1/p50, REL and NFkB2/p52. The NF-kappa-B heterodimer RELA/p65-c-Rel is a transcriptional activator.

Notable Publications

Author	Pubmed ID	Journal	Application
Jing Du	39419123	Toxicol Appl Pharmacol	WB
Hongyu Wang	35116901	Transl Cancer Res	WB

Storage

Storage:

Store at -20°C. Stable for one year after shipment.

Storage Buffer:

PBS with 0.02% sodium azide and 50% glycerol pH 7.3.

Aliquoting is unnecessary for -20°C storage

*** 20ul sizes contain 0.1% BSA

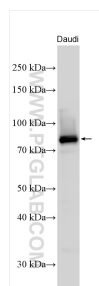
For technical support and original validation data for this product please contact:

T: 1 (888) 4PTGLAB (1-888-478-4522) (toll free in USA), or 1(312) 455-8498 (outside USA)

E: proteintech@ptglab.com
W: ptglab.com

This product is exclusively available under Proteintech Group brand and is not available to purchase from any other manufacturer.

Selected Validation Data



Various lysates were subjected to SDS PAGE followed by western blot with 27693-1-AP (REL antibody) at dilution of 1:2000 incubated at room temperature for 1.5 hours.