

For Research Use Only

INSL5 Polyclonal antibody

Catalog Number: 27697-1-AP



Basic Information

Catalog Number:

27697-1-AP

Size:

150ul, Concentration: 500 ug/ml by Nanodrop and 267 ug/ml by Bradford method using BSA as the standard;

Source:

Rabbit

Isotype:

IgG

Immunogen Catalog Number:

AG26833

GenBank Accession Number:

BC101646

GeneID (NCBI):

10022

UNIPROT ID:

Q9Y5Q6

Full Name:

insulin-Like 5

Observed MW:

12-15 kDa

Purification Method:

Antigen affinity purification

Recommended Dilutions:

WB 1:200-1:1000

Applications

Tested Applications:

WB, ELISA

Species Specificity:

mouse, rat

Positive Controls:

WB : mouse testis tissue, rat testis

Background Information

Insulin-like peptide 5 (INSL5), also named as UNQ156/PRO182, is a member of the relaxin/insulin superfamily and presents a tertiary structure similar to that of other insulin family members. It is located outside the cell membranes and highly expressed in rectum with lower levels in uterus and ascending and descending colon (PMID: 10458910). The calculated molecular weight of INSL5 is 15 kDa. A recent report suggested an important role for Insl5 in the regulation of insulin secretion and b-cell homeostasis. Other reports identified that colonic Insl5 expression is reduced by the gut microbiota and energy availability. In human diseases, INSL5 has been identified recently in colonic tissue and neuroendocrine tumors, but its specific functions in tumors remain to be elucidated (PMID: 32657028).

Storage

Storage:

Store at -20°C. Stable for one year after shipment.

Storage Buffer:

PBS with 0.02% sodium azide and 50% glycerol pH 7.3.

Aliquoting is unnecessary for -20°C storage

*** 20ul sizes contain 0.1% BSA

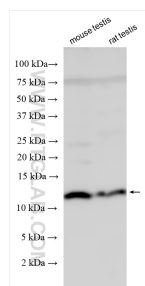
For technical support and original validation data for this product please contact:

T: 1 (888) 4PTGLAB (1-888-478-4522) (toll free in USA), or 1(312) 455-8498 (outside USA)

E: proteintech@ptglab.com
W: ptglab.com

This product is exclusively available under Proteintech Group brand and is not available to purchase from any other manufacturer.

Selected Validation Data



Various lysates were subjected to SDS PAGE followed by western blot with 27697-1-AP (INS5 antibody) at dilution of 1:400 incubated at room temperature for 1.5 hours.