

RREB1 Polyclonal antibody

Catalog Number: 27706-1-AP

Basic Information

Catalog Number: 27706-1-AP	GenBank Accession Number: NM_001003698	Purification Method: Antigen affinity purification
Size: 150ul , Concentration: 600 ug/ml by Nanodrop and 333 ug/ml by Bradford method using BSA as the standard;	GeneID (NCBI): 6239	Recommended Dilutions: WB 1:2000-1:12000 IHC 1:600-1:2400
Source: Rabbit	Full Name: ras responsive element binding protein 1	
Isotype: IgG	Calculated MW: 181 kDa	
Immunogen Catalog Number: AG26780	Observed MW: 250 kDa	

Applications

Tested Applications: WB, IHC, ELISA	Positive Controls:
Species Specificity: human	WB : Jurkat cells, LNCaP cells
Note-IHC: suggested antigen retrieval with TE buffer pH 9.0; (*) Alternatively, antigen retrieval may be performed with citrate buffer pH 6.0	IHC : human colon cancer tissue, human ovary cancer tissue

Background Information

RREB1, also named as FINB and Zep-1, belongs to the krueppel C2H2-type zinc-finger protein family. RREB1 is a transcription factor that binds specifically to the RAS-responsive elements (RRE) of gene promoters. RREB1 may be involved in Ras/Raf-mediated cell differentiation by enhancing calcitonin expression. RREB1 represses the angiotensinogen gene. RREB1 can induce expression of p53 and represses p16 which associated with the expression of tumour. It has been reported that the RREB1 can be a candidate gene for type 2 diabetes associated end-stage kidney disease. To some extent, the decrease of zinc in human pancreatic adenocarcinoma is associated with the downregulation of RREB1. RREB1 has some isoforms with 250 kDa, 180-200 kDa and 140-160 kDa protein. (PMID: 21703425, 15067362, 25050557, 25027322)

Storage

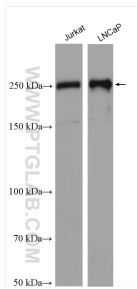
Storage:
Store at -20°C. Stable for one year after shipment.
Storage Buffer:
PBS with 0.02% sodium azide and 50% glycerol pH 7.3.
Aliquoting is unnecessary for -20°C storage

*** 20ul sizes contain 0.1% BSA

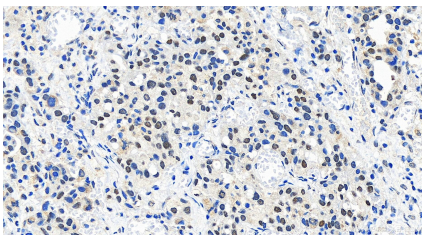
For technical support and original validation data for this product please contact:
T: 1 (888) 4PTGLAB (1-888-478-4522) (toll free in USA), or 1(312) 455-8498 (outside USA)
E: proteintech@ptglab.com
W: ptglab.com

This product is exclusively available under Proteintech Group brand and is not available to purchase from any other manufacturer.

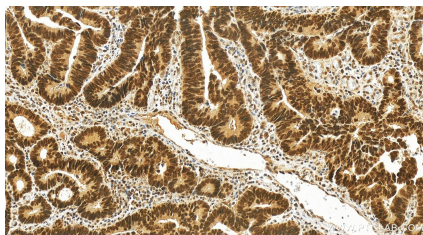
Selected Validation Data



Various lysates were subjected to SDS PAGE followed by western blot with 27706-1-AP (RREB1 antibody) at dilution of 1:6000 incubated at room temperature for 1.5 hours.



Immunohistochemical analysis of paraffin-embedded human ovary cancer tissue slide using 27706-1-AP (RREB1 antibody) at dilution of 1:1500 (under 20x lens). Heat mediated antigen retrieval with Tris-EDTA buffer (pH 9.0).



Immunohistochemical analysis of paraffin-embedded human colon cancer tissue slide using 27706-1-AP (RREB1 antibody) at dilution of 1:1200 (under 20x lens). Heat mediated antigen retrieval with Tris-EDTA buffer (pH 9.0).