

For Research Use Only

# SLC25A42 Polyclonal antibody

Catalog Number: 27720-1-AP



## Basic Information

<b>Catalog Number:</b> 27720-1-AP	<b>GenBank Accession Number:</b> BC045598	<b>Purification Method:</b> Antigen affinity purification
<b>Size:</b> 150ul , Concentration: 400 ug/ml by Nanodrop;	<b>GeneID (NCBI):</b> 284439	<b>Recommended Dilutions:</b> WB: 1:1000-1:4000
<b>Source:</b> Rabbit	<b>UNIPROT ID:</b> Q86VD7	
<b>Isotype:</b> IgG	<b>Full Name:</b> solute carrier family 25, member 42	
<b>Immunogen Catalog Number:</b> AG26313	<b>Calculated MW:</b> 318 aa, 35 kDa	
	<b>Observed MW:</b> 30-35 kDa	

## Applications

<b>Tested Applications:</b> WB, ELISA	<b>Positive Controls:</b> WB : Jurkat cells, mouse adipose tissue
<b>Species Specificity:</b> human, mouse	

## Background Information

SLC25A42 is a member of the SLC25 family of mitochondrial solute carriers. It is involved in the transport of crucial metabolic intermediates across the inner mitochondrial membrane, facilitating energy production and cellular metabolism. The gene encoding SLC25A42 is located on the human chromosome and expresses a protein that acts as a transporter in the mitochondria, aiding in the efficient exchange of molecules between the cytoplasm and the mitochondrial matrix. This protein has a calculated molecular weight of 30-35 kDa. This transporter may play a role in various physiological processes, potentially influencing mitochondrial function and overall cellular health (PMID: 40246810).

## Storage

**Storage:**  
Store at -20°C. Stable for one year after shipment.  
**Storage Buffer:**  
PBS with 0.02% sodium azide and 50% glycerol, pH7.3  
Aliquoting is unnecessary for -20°C storage

\*\*\* 20ul sizes contain 0.1% BSA

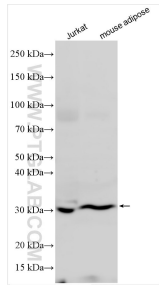
For technical support and original validation data for this product please contact:

T: 1 (888) 4PTGLAB (1-888-478-4522) (toll free in USA), or 1(312) 455-8498 (outside USA)

E: [proteintech@ptglab.com](mailto:proteintech@ptglab.com)  
W: [ptglab.com](http://ptglab.com)

This product is exclusively available under Proteintech Group brand and is not available to purchase from any other manufacturer.

## Selected Validation Data



Various lysates were subjected to SDS PAGE followed by western blot with 27720-1-AP (SLC25A42 antibody) at dilution of 1:2000 incubated at room temperature for 1.5 hours.