

For Research Use Only

# CCDC147 Polyclonal antibody, PBS Only

Catalog Number: 27739-1-PBS



## Basic Information

<b>Catalog Number:</b> 27739-1-PBS	<b>GenBank Accession Number:</b> BC109126	<b>Purification Method:</b> Antigen affinity purification
<b>Size:</b> 100ug, Concentration: 1 mg/ml by Nanodrop;	<b>GeneID (NCBI):</b> 159686	
<b>Source:</b> Rabbit	<b>UNIPROT ID:</b> Q5T655	
<b>Isotype:</b> IgG	<b>Full Name:</b> coiled-coil domain containing 147	
<b>Immunogen Catalog Number:</b> AG26943	<b>Calculated MW:</b> 872 aa, 103 kDa	
	<b>Observed MW:</b> 103 kDa	

## Applications

**Tested Applications:**  
IP, Indirect ELISA

**Species Specificity:**  
human, mouse

## Background Information

CCDC147 has an essential role in the assembly and organization of the sperm flagellar axoneme (PMID: 32791035).

## Storage

**Storage:**  
Store at -80°C.

**Storage Buffer:**  
PBS Only

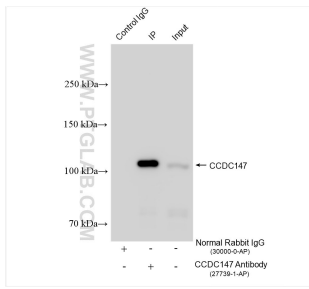
For technical support and original validation data for this product please contact:

T: 1 (888) 4PTGLAB (1-888-478-4522) (toll free in USA), or 1(312) 455-8498 (outside USA)

E: [proteintech@ptglab.com](mailto:proteintech@ptglab.com)  
W: [ptglab.com](http://ptglab.com)

This product is exclusively available under Proteintech Group brand and is not available to purchase from any other manufacturer.

## Selected Validation Data



IP result of anti-CCDC147 (IP:27739-1-AP, 4ug; Detection:27739-1-AP 1:1000) with mouse testis tissue lysate 1600 ug. This data was developed using the same antibody clone with 27739-1-PBS in a different storage buffer formulation.