

For Research Use Only

PRPF31 Polyclonal antibody

Catalog Number: 27750-1-AP



Basic Information

Catalog Number: 27750-1-AP	GenBank Accession Number: NM_015629	Purification Method: Antigen affinity purification
Size: 150ul , Concentration: 950 ug/ml by Nanodrop;	GeneID (NCBI): 26121	Recommended Dilutions: WB 1:2000-1:16000
Source: Rabbit	UNIPROT ID: Q8WWY3	IHC 1:50-1:500
Isotype: IgG	Full Name: PRP31 pre-mRNA processing factor 31 homolog (S. cerevisiae)	IF-P 1:50-1:500
Immunogen Catalog Number: AG26716	Calculated MW: 55 kDa	
	Observed MW: 55 kDa	

Applications

Tested Applications: WB, IHC, IF-P, ELISA	Positive Controls:
Species Specificity: human, mouse	WB : A549 cells, Caco-2 cells, Hela cells, Jurkat cells
Note-IHC: suggested antigen retrieval with TE buffer pH 9.0; (*) Alternatively, antigen retrieval may be performed with citrate buffer pH 6.0	IHC : mouse eye tissue,
	IF-P : mouse eye tissue,

Background Information

PRPF31 is a component of the spliceosome complex. It is recruited to introns following the attachment of U4 and U6 RNAs and the 15.5K protein. The addition of PRPF31 is crucial for the transition of the spliceosomal complex to the activated state.

Storage

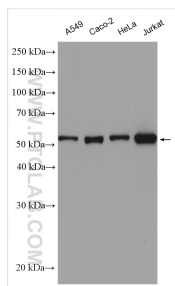
Storage:
Store at -20°C. Stable for one year after shipment.
Storage Buffer:
PBS with 0.02% sodium azide and 50% glycerol pH 7.3.
Aliquoting is unnecessary for -20°C storage

*** 20ul sizes contain 0.1% BSA

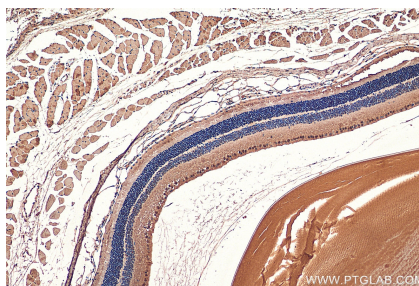
For technical support and original validation data for this product please contact:
T: 1 (888) 4PTGLAB (1-888-478-4522) (toll free in USA), or 1(312) 455-8498 (outside USA)
E: proteintech@ptglab.com
W: ptglab.com

This product is exclusively available under Proteintech Group brand and is not available to purchase from any other manufacturer.

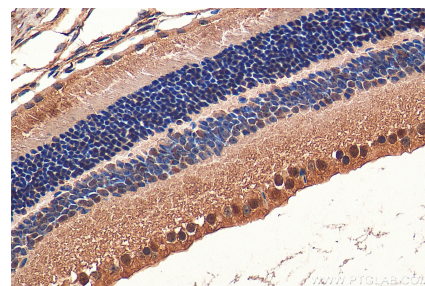
Selected Validation Data



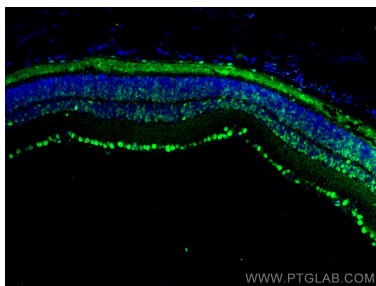
Various lysates were subjected to SDS PAGE followed by western blot with 27750-1-AP (PRPF31 antibody) at dilution of 1:8000 incubated at room temperature for 1.5 hours.



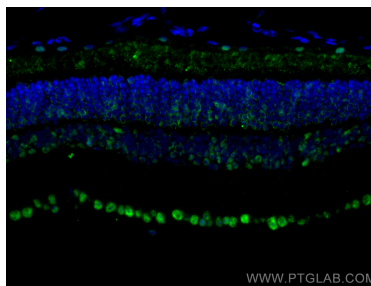
Immunohistochemical analysis of paraffin-embedded mouse eye tissue slide using 27750-1-AP (PRPF31 antibody) at dilution of 1:200 (under 10x lens). Heat mediated antigen retrieval with Tris-EDTA buffer (pH 9.0).



Immunohistochemical analysis of paraffin-embedded mouse eye tissue slide using 27750-1-AP (PRPF31 antibody) at dilution of 1:200 (under 40x lens). Heat mediated antigen retrieval with Tris-EDTA buffer (pH 9.0).



Immunofluorescent analysis of (4% PFA) fixed mouse eye tissue using PRPF31 antibody (27750-1-AP) at dilution of 1:200 and CoraLite®488-Conjugated Goat Anti-Rabbit IgG(H+L).



Immunofluorescent analysis of (4% PFA) fixed mouse eye tissue using PRPF31 antibody (27750-1-AP) at dilution of 1:200 and CoraLite®488-Conjugated Goat Anti-Rabbit IgG(H+L).