

For Research Use Only

# AVL9 Polyclonal antibody

Catalog Number:27758-1-AP



## Basic Information

<b>Catalog Number:</b> 27758-1-AP	<b>GenBank Accession Number:</b> BC027724	<b>Purification Method:</b> Antigen affinity purification
<b>Size:</b> 150ul , Concentration: 580 ug/ml by Nanodrop;	<b>GeneID (NCBI):</b> 23080	<b>Recommended Dilutions:</b> WB: 1:1000-1:6000
<b>Source:</b> Rabbit	<b>UNIPROT ID:</b> Q8NBF6	
<b>Isotype:</b> IgG	<b>Full Name:</b> AVL9 homolog (S. cerevisiae)	
<b>Immunogen Catalog Number:</b> AG26208	<b>Observed MW:</b> 72 kDa	

## Applications

<b>Tested Applications:</b> WB, ELISA	<b>Positive Controls:</b> WB : HEK-293 cells, K-562 cells
<b>Species Specificity:</b> human	

## Background Information

AVL9 is primarily involved in cell migration and late secretory pathway transport . In yeast, Avl9p functions in post-Golgi vesicle-mediated transport, where loss of the protein causes defects in secretory vesicle generation and polarized growth . In humans, the protein has been shown to function in cell migration, though the precise molecular mechanism remains under investigation.(PMID: 34991461,PMID: 41542567)

## Storage

**Storage:**  
Store at -20°C. Stable for one year after shipment.  
**Storage Buffer:**  
PBS with 0.02% sodium azide and 50% glycerol, pH7.3  
Aliquoting is unnecessary for -20°C storage

\*\*\* 20ul sizes contain 0.1% BSA

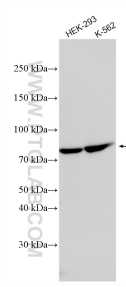
For technical support and original validation data for this product please contact:

T: 1 (888) 4PTGLAB (1-888-478-4522) (toll free in USA), or 1(312) 455-8498 (outside USA)

E: [proteintech@ptglab.com](mailto:proteintech@ptglab.com)  
W: [ptglab.com](http://ptglab.com)

This product is exclusively available under Proteintech Group brand and is not available to purchase from any other manufacturer.

## Selected Validation Data



Various lysates were subjected to SDS PAGE followed by western blot with 27758-1-AP (AVL9 antibody) at dilution of 1:3000 incubated at room temperature for 1.5 hours.