

For Research Use Only

AVL9 Polyclonal antibody, PBS Only

Catalog Number:27758-1-PBS



Basic Information

Catalog Number: 27758-1-PBS	GenBank Accession Number: BC027724	Purification Method: Antigen affinity purification
Size: 100ug , Concentration: 1 mg/ml by Nanodrop;	GeneID (NCBI): 23080	
Source: Rabbit	UNIPROT ID: Q8NBF6	
Isotype: IgG	Full Name: AVL9 homolog (S. cerevisiae)	
Immunogen Catalog Number: AG26208	Observed MW: 72 kDa	

Applications

Tested Applications:
WB, Indirect ELISA

Species Specificity:
human

Background Information

AVL9 is primarily involved in cell migration and late secretory pathway transport . In yeast, Avl9p functions in post-Golgi vesicle-mediated transport, where loss of the protein causes defects in secretory vesicle generation and polarized growth . In humans, the protein has been shown to function in cell migration, though the precise molecular mechanism remains under investigation.(PMID: 34991461,PMID: 41542567)

Storage

Storage:
Store at -80°C.
Storage Buffer:
PBS only, pH7.3

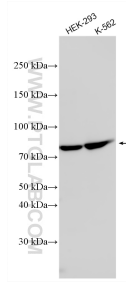
For technical support and original validation data for this product please contact:

T: 1 (888) 4PTGLAB (1-888-478-4522) (toll free
in USA), or 1(312) 455-8498 (outside USA)

E: proteintech@ptglab.com
W: ptglab.com

This product is exclusively available under Proteintech Group brand and is not available to purchase from any other manufacturer.

Selected Validation Data



Various lysates were subjected to SDS PAGE followed by western blot with 27758-1-AP (AVL9 antibody) at dilution of 1:3000 incubated at room temperature for 1.5 hours. This data was developed using the same antibody clone with 27758-1-PBS in a different storage buffer formulation.