

For Research Use Only

SALL1 Polyclonal antibody, PBS Only

Catalog Number: 27761-1-PBS



Basic Information

Catalog Number: 27761-1-PBS	GenBank Accession Number: NM_001127892	Purification Method: Antigen affinity purification
Size: 100ug, Concentration: 1 mg/ml by Nanodrop;	GeneID (NCBI): 6299	
Source: Rabbit	UNIPROT ID: Q9NSC2	
Isotype: IgG	Full Name: sal-like 1 (Drosophila)	
Immunogen Catalog Number: AG26766	Calculated MW: 140 kDa	
	Observed MW: 140 kDa	

Applications

Tested Applications:
IHC, IF-P, Indirect ELISA

Species Specificity:
human, mouse, rat

Background Information

SALL1 (Sal-like protein 1), also known as SAL1. It is located in the cytoplasm and nucleus. The protein is mainly expressed in the kidney. Transcriptional repressor involved in organogenesis. The protein plays an essential role in ureteric bud invasion during kidney development. The molecular weight of SALL1 is 140 kDa.

Storage

Storage:
Store at -80°C.

Storage Buffer:
PBS only, pH7.3

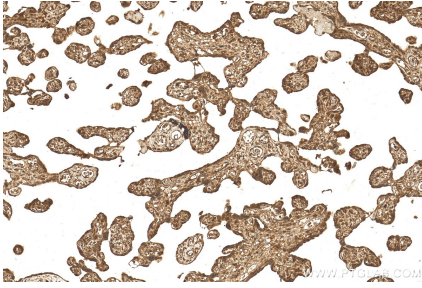
For technical support and original validation data for this product please contact:

T: 1 (888) 4PTGLAB (1-888-478-4522) (toll free
in USA), or 1(312) 455-8498 (outside USA)

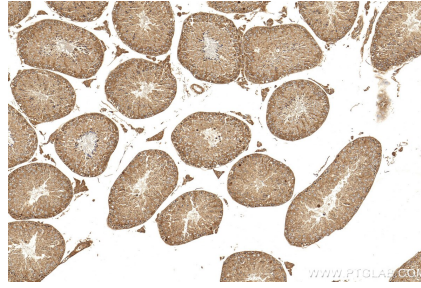
E: proteintech@ptglab.com
W: ptglab.com

This product is exclusively available under Proteintech Group brand and is not available to purchase from any other manufacturer.

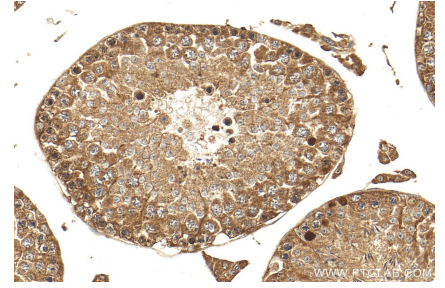
Selected Validation Data



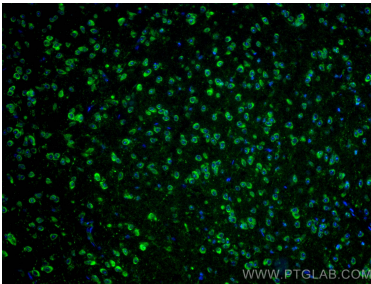
Immunohistochemical analysis of paraffin-embedded human placenta tissue slide using 27761-1-AP (SALL1 antibody) at dilution of 1:200 (under 10x lens). Heat mediated antigen retrieval with Tris-EDTA buffer (pH 9.0). This data was developed using the same antibody clone with 27761-1-PBS in a different storage buffer formulation.



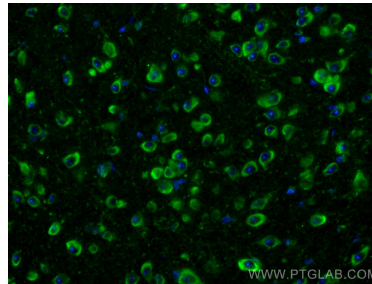
Immunohistochemical analysis of paraffin-embedded mouse testis tissue slide using 27761-1-AP (SALL1 antibody) at dilution of 1:200 (under 10x lens). Heat mediated antigen retrieval with Tris-EDTA buffer (pH 9.0). This data was developed using the same antibody clone with 27761-1-PBS in a different storage buffer formulation.



Immunohistochemical analysis of paraffin-embedded mouse testis tissue slide using 27761-1-AP (SALL1 antibody) at dilution of 1:200 (under 40x lens). Heat mediated antigen retrieval with Tris-EDTA buffer (pH 9.0). This data was developed using the same antibody clone with 27761-1-PBS in a different storage buffer formulation.



Immunofluorescent analysis of (4% PFA) fixed mouse brain tissue using SALL1 antibody (27761-1-AP) at dilution of 1:200 and CoraLite@488-Conjugated AffiniPure Goat Anti-Rabbit IgG(H+L). This data was developed using the same antibody clone with 27761-1-PBS in a different storage buffer formulation.



Immunofluorescent analysis of (4% PFA) fixed mouse brain tissue using SALL1 antibody (27761-1-AP) at dilution of 1:200 and CoraLite@488-Conjugated AffiniPure Goat Anti-Rabbit IgG(H+L). This data was developed using the same antibody clone with 27761-1-PBS in a different storage buffer formulation.