

For Research Use Only

CSDA Polyclonal antibody, PBS Only

Catalog Number: 27785-1-PBS

Featured Product



Basic Information

Catalog Number:

27785-1-PBS

Size:

100ug, Concentration: 1 mg/ml by Nanodrop;

Source:

Rabbit

Isotype:

IgG

Immunogen Catalog Number:

AG26839

GenBank Accession Number:

BC008801

GeneID (NCBI):

8531

UNIPROT ID:

P16989

Full Name:

cold shock domain protein A

Calculated MW:

40 kDa

Observed MW:

60-68 kDa

Purification Method:

Antigen affinity purification

Applications

Tested Applications:

WB, IHC, IF/ICC, Indirect ELISA

Species Specificity:

human, mouse, rat

Background Information

CSDA (Cold shock domain protein A), also known as DBPA (DNA-binding protein A), YBX3 (Y-box protein 3), is a DNA-binding protein that represses angiogenesis and lymphangiogenesis by directly binding to hypoxia response element (HRE) and serum response element (SRE). CSDA is ubiquitous expressed in human skeletal muscle, heart, and decidual cells, which is thought to a multifunctional epithelial-specific protein involved in gene transcription, DNA repair, and interaction with other proteins (PMID: 33816248). CSDA is a nucleic-acid-binding protein that directly regulates gene expression by using different mechanisms, and acts as a translational repressor (e.g., MYH9 and SPTBN1) and positive regulator of mRNA stability (PMID: 31189097). Western blot analysis detected CSDA at a range of 50-70 kDa due to the anomalous mobility of Y-box proteins (PMID: 38255791).

Storage

Storage:

Store at -80°C.

Storage Buffer:

PBS only, pH7.3

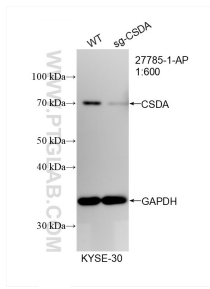
For technical support and original validation data for this product please contact:

T: 1 (888) 4PTGLAB (1-888-478-4522) (toll free in USA), or 1(312) 455-8498 (outside USA)

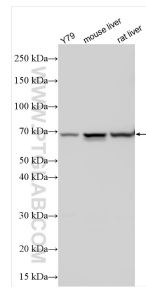
E: proteintech@ptglab.com
W: ptglab.com

This product is exclusively available under Proteintech Group brand and is not available to purchase from any other manufacturer.

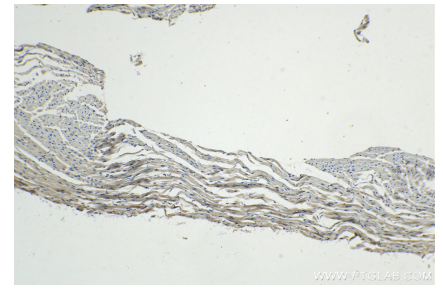
Selected Validation Data



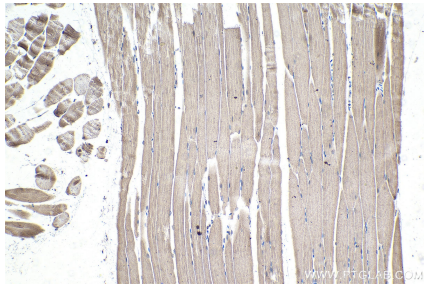
WB result of CSDA antibody (27785-1-AP; 1:1000; room temperature for 1.5 hours) with wild-type and CSDA knockout KYSE-30 cells. This data was developed using the same antibody clone with 27785-1-PBS in a different storage buffer formulation.



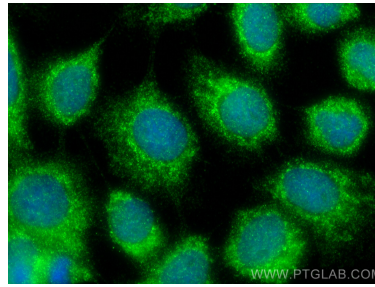
Various lysates were subjected to SDS PAGE followed by western blot with 27785-1-AP (CSDA antibody) at dilution of 1:2000 incubated at room temperature for 1.5 hours. This data was developed using the same antibody clone with 27785-1-PBS in a different storage buffer formulation.



Immunohistochemical analysis of paraffin-embedded mouse heart tissue slide using 27785-1-AP (CSDA antibody) at dilution of 1:200 (under 10x lens). Heat mediated antigen retrieval with Tris-EDTA buffer (pH 9.0). This data was developed using the same antibody clone with 27785-1-PBS in a different storage buffer formulation.



Immunohistochemical analysis of paraffin-embedded mouse skeletal muscle tissue slide using 27785-1-AP (CSDA antibody) at dilution of 1:200 (under 10x lens). Heat mediated antigen retrieval with Tris-EDTA buffer (pH 9.0). This data was developed using the same antibody clone with 27785-1-PBS in a different storage buffer formulation.



Immunofluorescent analysis of (-20°C Methanol) fixed A431 cells using CSDA antibody (27785-1-AP) at dilution of 1:400 and CoraLite®488-Conjugated Goat Anti-Rabbit IgG(H+L) (SA00013-2). This data was developed using the same antibody clone with 27785-1-PBS in a different storage buffer formulation.