

# ETHE1 Polyclonal antibody

Catalog Number: 27786-1-AP

## Basic Information

<b>Catalog Number:</b> 27786-1-AP	<b>GenBank Accession Number:</b> BC008250	<b>Purification Method:</b> Antigen affinity purification
<b>Size:</b> 150ul , Concentration: 260 µg/ml by Nanodrop and 233 µg/ml by Bradford method using BSA as the standard;	<b>GeneID (NCBI):</b> 23474	<b>Recommended Dilutions:</b> WB 1:500-1:2000 IHC 1:50-1:500
<b>Source:</b> Rabbit	<b>Full Name:</b> ethylmalonic encephalopathy 1	
<b>Isotype:</b> IgG	<b>Calculated MW:</b> 28 kDa	
<b>Immunogen Catalog Number:</b> AG26597	<b>Observed MW:</b> 28 kDa	

## Applications

<b>Tested Applications:</b> IHC, WB, ELISA	<b>Positive Controls:</b>
<b>Species Specificity:</b> Human, mouse	<b>WB :</b> BGC-823 cells, HeLa cells, mouse liver tissue
<b>Note-IHC: suggested antigen retrieval with TE buffer pH 9.0; (*) Alternatively, antigen retrieval may be performed with citrate buffer pH 6.0</b>	<b>IHC :</b> human liver tissue, human colon cancer tissue

## Background Information

ETHE1, a gene encoding a b-lactamase-like, iron-coordinating metalloprotein, is mutated in ethylmalonic encephalopathy. In humans, ETHE1 gene is proved to encode the SDO in mitochondria and its mutations lead to a fatal autosomal recessive mitochondrial disease: ethylmalonic encephalopathy.

## Storage

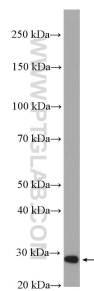
**Storage:**  
Store at -20°C. Stable for one year after shipment.  
**Storage Buffer:**  
PBS with 0.02% sodium azide and 50% glycerol pH 7.3.  
Aliquoting is unnecessary for -20°C storage

\*\*\* 20ul sizes contain 0.1% BSA

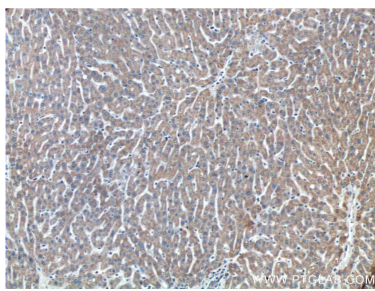
For technical support and original validation data for this product please contact:  
T: 1 (888) 4PTGLAB (1-888-478-4522) (toll free in USA), or 1(312) 455-8498 (outside USA)  
E: [proteintech@ptglab.com](mailto:proteintech@ptglab.com)  
W: [ptglab.com](http://ptglab.com)

This product is exclusively available under Proteintech Group brand and is not available to purchase from any other manufacturer.

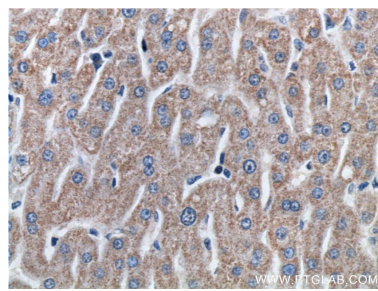
## Selected Validation Data



BGC-823 cells were subjected to SDS PAGE followed by western blot with 27786-1-AP (ETHE1 antibody) at dilution of 1:1000 incubated at room temperature for 1.5 hours.



Immunohistochemical analysis of paraffin-embedded human liver tissue slide using 27786-1-AP (ETHE1 antibody) at dilution of 1:200 (under 10x lens).



Immunohistochemical analysis of paraffin-embedded human liver tissue slide using 27786-1-AP (ETHE1 antibody) at dilution of 1:200 (under 40x lens).