

For Research Use Only

# PNPLA7 Polyclonal antibody, PBS Only

Catalog Number: 27787-1-PBS



## Basic Information

<b>Catalog Number:</b> 27787-1-PBS	<b>GenBank Accession Number:</b> NM_001098537	<b>Purification Method:</b> Antigen affinity purification
<b>Size:</b> 100ug, Concentration: 1 mg/ml by Nanodrop;	<b>GeneID (NCBI):</b> 375775	
<b>Source:</b> Rabbit	<b>UNIPROT ID:</b> Q6ZV29	
<b>Isotype:</b> IgG	<b>Full Name:</b> patatin-like phospholipase domain containing 7	
<b>Immunogen Catalog Number:</b> AG27184	<b>Calculated MW:</b> 146 kDa	

## Applications

**Tested Applications:**  
IHC, Indirect ELISA

**Species Specificity:**  
human, mouse

## Background Information

PNPLA7 (Patatin-like phospholipase domain-containing protein 7), also termed NTE-related 1 (NTE-R1) or NRE, is a member of the PNPLAs family, which is conserved protein in mice, rats and humans. It serves key roles in triglyceride hydrolysis, energy metabolism, lipid droplet (LD), and in regulation of adipocyte differentiation. It is reported that PNPLA7 was down-regulated in HCC through hypermethylation of its promoter, which indicates that PNPLA7 may be a potential biomarker for HCC diagnosis (PMID: 16799181, 27347198).

## Storage

**Storage:**  
Store at -80°C.

**Storage Buffer:**  
PBS only, pH7.3

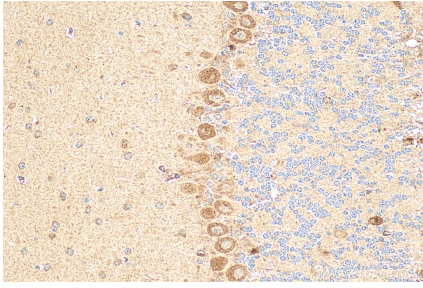
For technical support and original validation data for this product please contact:

T: 1 (888) 4PTGLAB (1-888-478-4522) (toll free  
in USA), or 1(312) 455-8498 (outside USA)

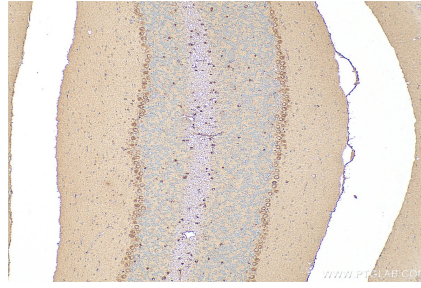
E: [proteintech@ptglab.com](mailto:proteintech@ptglab.com)  
W: [ptglab.com](http://ptglab.com)

**This product is exclusively available under Proteintech Group brand and is not available to purchase from any other manufacturer.**

## Selected Validation Data



Immunohistochemical analysis of paraffin-embedded mouse cerebellum tissue slide using 27787-1-AP (PNPLA7 antibody) at dilution of 1:200 (under 40x lens). Heat mediated antigen retrieval with Tris-EDTA buffer (pH 9.0). This data was developed using the same antibody clone with 27787-1-PBS in a different storage buffer formulation.



Immunohistochemical analysis of paraffin-embedded mouse cerebellum tissue slide using 27787-1-AP (PNPLA7 antibody) at dilution of 1:200 (under 10x lens). Heat mediated antigen retrieval with Tris-EDTA buffer (pH 9.0). This data was developed using the same antibody clone with 27787-1-PBS in a different storage buffer formulation.