

For Research Use Only

# LRRC56 Polyclonal antibody

Catalog Number: 27796-1-AP



## Basic Information

<b>Catalog Number:</b> 27796-1-AP	<b>GenBank Accession Number:</b> BC035936	<b>Purification Method:</b> Antigen affinity purification
<b>Size:</b> 150ul , Concentration: 600 ug/ml by Nanodrop;	<b>GeneID (NCBI):</b> 115399	<b>Recommended Dilutions:</b> IHC 1:200-1:800 IF/ICC 1:50-1:500
<b>Source:</b> Rabbit	<b>UNIPROT ID:</b> Q8IYG6	
<b>Isotype:</b> IgG	<b>Full Name:</b> leucine rich repeat containing 56	
<b>Immunogen Catalog Number:</b> AG22018	<b>Calculated MW:</b> 542 aa, 59 kDa	

## Applications

<b>Tested Applications:</b> IHC, IF/ICC, ELISA	<b>Positive Controls:</b>
<b>Species Specificity:</b> human, mouse, rat	<b>IHC :</b> mouse brain tissue, rat testis tissue
<b>Note-IHC:</b> suggested antigen retrieval with <b>TE buffer pH 9.0; (*) Alternatively, antigen retrieval may be performed with citrate buffer pH 6.0</b>	<b>IF/ICC :</b> U-251 cells,

## Background Information

Leucine-rich repeat (LRR)-containing gene 56 (LRRC56) was recently reported to be a homolog of the Outer Dynein Arm 8 gene (oda8), a gene necessary for the cytoplasmic maturation of the outer dynein arms (ODA) in the flagella of algae. LRRC56 is recruited during axoneme construction in an IFT-dependent manner and is required for the addition of dynein arms to the distal segment of the flagellum. Human LRRC56 encodes a 542 amino acid protein determined from transcriptomic studies and immunohistochemistry to be expressed in many organs, mostly in testis and pituitary gland.

## Storage

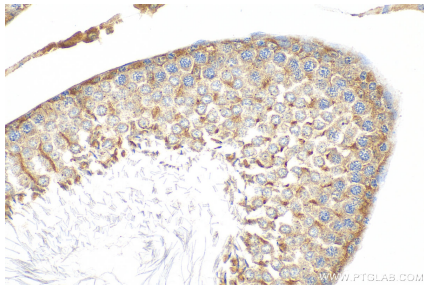
**Storage:**  
Store at -20°C. Stable for one year after shipment.  
**Storage Buffer:**  
PBS with 0.02% sodium azide and 50% glycerol pH 7.3.  
**Aliquoting is unnecessary for -20°C storage**

\*\*\* 20ul sizes contain 0.1% BSA

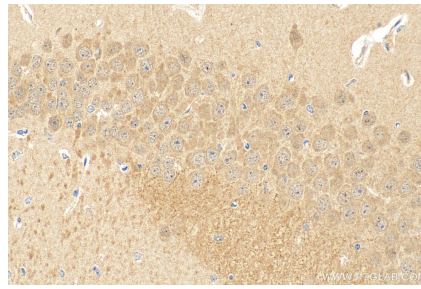
For technical support and original validation data for this product please contact:  
T: 1 (888) 4PTGLAB (1-888-478-4522) (toll free in USA), or 1(312) 455-8498 (outside USA)  
E: [proteintech@ptglab.com](mailto:proteintech@ptglab.com)  
W: [ptglab.com](http://ptglab.com)

This product is exclusively available under Proteintech Group brand and is not available to purchase from any other manufacturer.

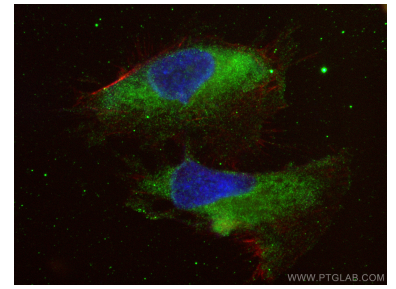
## Selected Validation Data



Immunohistochemical analysis of paraffin-embedded rat testis tissue slide using 27796-1-AP (LRRC56 antibody) at dilution of 1:400 (under 40x lens). Heat mediated antigen retrieval with Tris-EDTA buffer (pH 9.0).



Immunohistochemical analysis of paraffin-embedded mouse brain tissue slide using 27796-1-AP (LRRC56 antibody) at dilution of 1:400 (under 40x lens). Heat mediated antigen retrieval with Tris-EDTA buffer (pH 9.0).



Immunofluorescent analysis of (-20°C Ethanol) fixed U-251 cells using LRRC56 antibody (27796-1-AP) at dilution of 1:200 and CoraLite®488-Conjugated Goat Anti-Rabbit IgG(H+L) (SA00013-2), CL594-Phalloidin (red).