

For Research Use Only

SPG7 Polyclonal antibody, PBS Only

Catalog Number: 27801-1-PBS



Basic Information

Catalog Number: 27801-1-PBS	GenBank Accession Number: BC007692	Purification Method: Antigen affinity purification
Size: 100ug , Concentration: 1 mg/ml by Nanodrop;	GeneID (NCBI): 6687	
Source: Rabbit	UNIPROT ID: Q9UQ90	
Isotype: IgG	Full Name: spastic paraplegia 7 (pure and complicated autosomal recessive)	
Immunogen Catalog Number: AG26265	Calculated MW: 88 kDa	
	Observed MW: 54 kDa, 70 kDa, 80kDa	

Applications

Tested Applications:
WB, IHC, IP, Indirect ELISA

Species Specificity:
human, mouse

Background Information

SPG7 encodes a nuclear-encoded mitochondrial metalloprotease protein that is a member of the AAA protein family. Two transcript variants encoding distinct isoforms have been identified. The molecular weight of SPG7 is about 88-100 kDa (precursor), 80 kDa (intermediate) and 70 kDa (mature)(PMID: 24767997), while the molecular weight of isoform 2 is about 54 kDa.

Storage

Storage:
Store at -80°C.

Storage Buffer:
PBS only, pH7.3

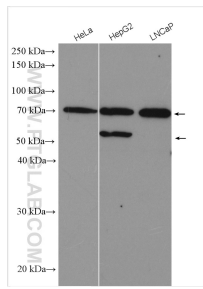
For technical support and original validation data for this product please contact:

T: 1 (888) 4PTGLAB (1-888-478-4522) (toll free in USA), or 1(312) 455-8498 (outside USA)

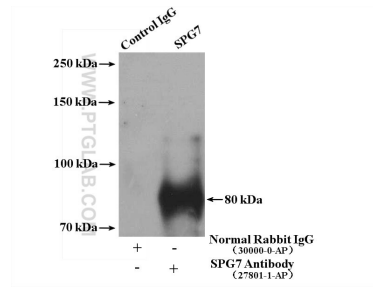
E: proteintech@ptglab.com
W: ptglab.com

This product is exclusively available under Proteintech Group brand and is not available to purchase from any other manufacturer.

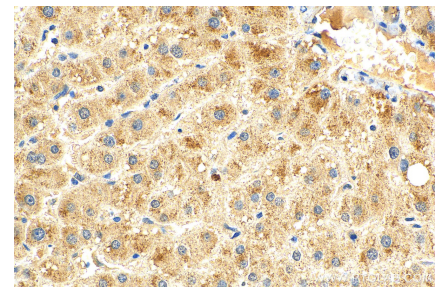
Selected Validation Data



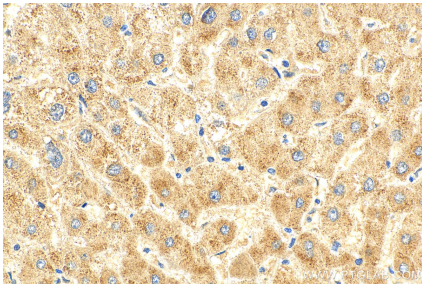
Various lysates were subjected to SDS PAGE followed by western blot with 27801-1-AP (SPG7 antibody) at dilution of 1:1000 incubated at room temperature for 1.5 hours. This data was developed using the same antibody clone with 27801-1-PBS in a different storage buffer formulation.



IP result of anti-SPG7 (IP:27801-1-AP, 4ug; Detection:27801-1-AP 1:500) with HeLa cells lysate 2800 ug. This data was developed using the same antibody clone with 27801-1-PBS in a different storage buffer formulation.



Immunohistochemical analysis of paraffin-embedded human liver tissue slide using 27801-1-AP (SPG7 antibody) at dilution of 1:200 (under 40x lens). Heat mediated antigen retrieval with Tris-EDTA buffer (pH 9.0). This data was developed using the same antibody clone with 27801-1-PBS in a different storage buffer formulation.



Immunohistochemical analysis of paraffin-embedded human liver tissue slide using 27801-1-AP (SPG7 antibody) at dilution of 1:200 (under 40x lens). Heat mediated antigen retrieval with Tris-EDTA buffer (pH 9.0). This data was developed using the same antibody clone with 27801-1-PBS in a different storage buffer formulation.