

For Research Use Only

# CHO cells Polyclonal antibody

Catalog Number: 27803-1-AP

2 Publications



## Basic Information

Catalog Number:

27803-1-AP

GenBank Accession Number:

GeneID (NCBI):

Purification Method:

Antigen affinity purification

Size:

150ul , Concentration: 4000 ug/ml by Nanodrop and 1333 ug/ml by Bradford method using BSA as the standard;

Full Name:

Recommended Dilutions:

WB 1:500-1:2000

Source:

Rabbit

Isotype:

IgG

## Applications

Tested Applications:

WB, ELISA

Positive Controls:

WB : CHO cells,

Cited Applications:

WB, IF

Species Specificity:

hamster

Cited Species:

human

## Background Information

CHO cells (Chinese Hamster Ovary cells) are a laboratory-cultured cell line derived from cells of the ovaries of Chinese hamsters. This antibody is raised by the total CHO cell lysate. It detects all the CHO proteins.

## Notable Publications

Author	Pubmed ID	Journal	Application
Shuohui Dong	35898887	Front Oncol	WB
Emma C Couves	36797260	Nat Commun	IF

## Storage

Storage:

Store at -20°C. Stable for one year after shipment.

Storage Buffer:

PBS with 0.02% sodium azide and 50% glycerol pH 7.3.

Aliquoting is unnecessary for -20°C storage

\*\*\* 20ul sizes contain 0.1% BSA

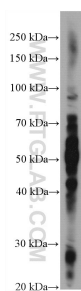
For technical support and original validation data for this product please contact:

T: 1 (888) 4PTGLAB (1-888-478-4522) (toll free in USA), or 1(312) 455-8498 (outside USA)

E: [proteintech@ptglab.com](mailto:proteintech@ptglab.com)  
W: [ptglab.com](http://ptglab.com)

This product is exclusively available under Proteintech Group brand and is not available to purchase from any other manufacturer.

## Selected Validation Data



CHO cells were subjected to SDS PAGE followed by western blot with 27803-1-AP (CHO cells antibody) at dilution of 1:1000 incubated at room temperature for 1.5 hours.