

For Research Use Only

PPP4R1 Polyclonal antibody

Catalog Number: 27805-1-AP

Featured Product

2 Publications



Basic Information

Catalog Number:

27805-1-AP

Size:

150ul, Concentration: 700 ug/ml by Nanodrop and 400 ug/ml by Bradford method using BSA as the standard;

Source:

Rabbit

Isotype:

IgG

Immunogen Catalog Number:

AG26405

GenBank Accession Number:

BC060829

GeneID (NCBI):

9989

UNIPROT ID:

Q8TF05

Full Name:

protein phosphatase 4, regulatory subunit 1

Calculated MW:

107 kDa

Observed MW:

120-130 kDa

Purification Method:

Antigen affinity purification

Recommended Dilutions:

WB 1:2000-1:16000

IP 0.5-4.0 ug for 1.0-3.0 mg of total protein lysate

IHC 1:50-1:500

Applications

Tested Applications:

WB, IP, IHC, ELISA

Cited Applications:

WB, IP, IF, IHC

Species Specificity:

Human

Cited Species:

human

Note-IHC: suggested antigen retrieval with TE buffer pH 9.0; (*) Alternatively, antigen retrieval may be performed with citrate buffer pH 6.0

Positive Controls:

WB : HEK-293T cells, HeLa cells, HEK-293 cells, A431 cells

IP : HEK-293T cells,

IHC : human liver cancer tissue,

Notable Publications

| Author | Pubmed ID | Journal | Application |
|-------------|-----------|-------------------|--------------|
| Weimin Xu | 38424148 | Cell Death Differ | WB,IP |
| Zhiqiang He | 38301910 | Cancer Lett | WB,IHC,IF,IP |

Storage

Storage:

Store at -20°C. Stable for one year after shipment.

Storage Buffer:

PBS with 0.02% sodium azide and 50% glycerol pH 7.3.

Aliquoting is unnecessary for -20°C storage

*** 20ul sizes contain 0.1% BSA

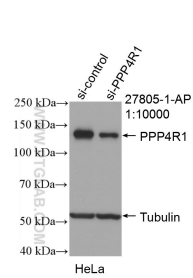
For technical support and original validation data for this product please contact:

T: 1 (888) 4PTGLAB (1-888-478-4522) (toll free in USA), or 1(312) 455-8498 (outside USA)

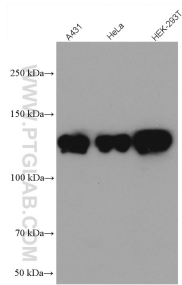
E: proteintech@ptglab.com
W: ptglab.com

This product is exclusively available under Proteintech Group brand and is not available to purchase from any other manufacturer.

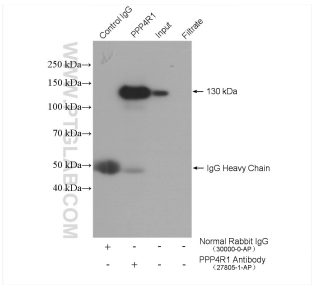
Selected Validation Data



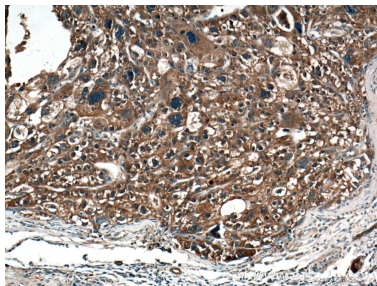
WB result of PPP4R1 antibody (27805-1-AP; 1:10000; incubated at room temperature for 1.5 hours) with sh-Control and sh-PPP4R1 transfected HeLa cells.



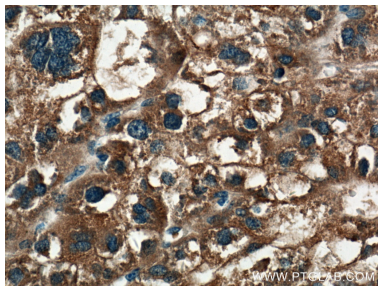
Various lysates were subjected to SDS PAGE followed by western blot with 27805-1-AP (PPP4R1 antibody) at dilution of 1:8000 incubated at room temperature for 1.5 hours.



IP result of anti-PPP4R1 (IP:27805-1-AP, 4ug; Detection:27805-1-AP 1:2000) with HEK-293T cells lysate 4000 ug.



Immunohistochemical analysis of paraffin-embedded human liver cancer tissue slide using 27805-1-AP (PPP4R1 antibody) at dilution of 1:200 (under 10x lens).



Immunohistochemical analysis of paraffin-embedded human liver cancer tissue slide using 27805-1-AP (PPP4R1 antibody) at dilution of 1:200 (under 40x lens).