

For Research Use Only

PARG Polyclonal antibody

Catalog Number: 27808-1-AP

3 Publications



Basic Information

Catalog Number:

27808-1-AP

Size:

150ul, Concentration: 900 µg/ml by Nanodrop and 467 µg/ml by Bradford method using BSA as the standard;

Source:

Rabbit

Isotype:

IgG

Immunogen Catalog Number:

AG27137

GenBank Accession Number:

BC052966

GeneID (NCBI):

8505

Full Name:

poly (ADP-ribose) glycohydrolase

Calculated MW:

111 kDa

Observed MW:

100-111 kDa

Purification Method:

Antigen affinity purification

Recommended Dilutions:

WB 1:2000-1:10000

IP 0.5-4.0 µg for IP and 1:200-1:1000

for WB

IHC 1:50-1:500

Applications

Tested Applications:

IHC, IP, WB, ELISA

Cited Applications:

IF, WB

Species Specificity:

Human, Mouse

Cited Species:

human, zebrafish

Positive Controls:

WB : K-562 cells,

IP : mouse testis tissue,

IHC : human breast cancer tissue,

Note-IHC: suggested antigen retrieval with TE buffer pH 9.0; (*) Alternatively, antigen retrieval may be performed with citrate buffer pH 6.0

Background Information

Notable Publications

Author	Pubmed ID	Journal	Application
Wenchang Zhang	36146855	Viruses	WB, IF
Binghai Zhou	32483468	Theranostics	WB
Anna Rita Bianchi	37240112	Int J Mol Sci	WB

Storage

Storage:

Store at -20°C. Stable for one year after shipment.

Storage Buffer:

PBS with 0.02% sodium azide and 50% glycerol pH 7.3.

Aliquoting is unnecessary for -20°C storage

*** 20ul sizes contain 0.1% BSA

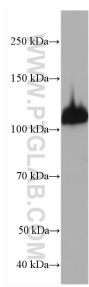
For technical support and original validation data for this product please contact:

T: 1 (888) 4PTGLAB (1-888-478-4522) (toll free in USA), or 1(312) 455-8498 (outside USA)

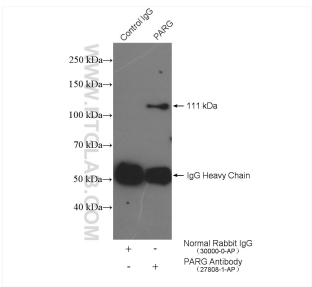
E: proteintech@ptglab.com
W: ptglab.com

This product is exclusively available under Proteintech Group brand and is not available to purchase from any other manufacturer.

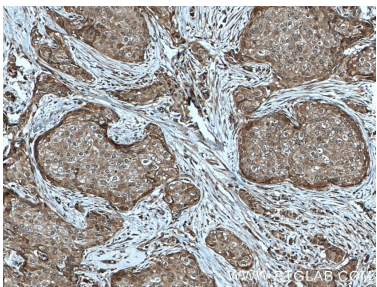
Selected Validation Data



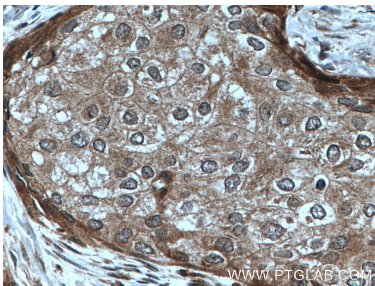
K-562 cells were subjected to SDS PAGE followed by western blot with 27808-1-AP (PARG antibody) at dilution of 1:5000 incubated at room temperature for 1.5 hours.



IP result of anti-PARG (IP:27808-1-AP, 4ug; Detection:27808-1-AP 1:300) with mouse testis tissue lysate 3920 ug.



Immunohistochemical analysis of paraffin-embedded human breast cancer tissue slide using 27808-1-AP (PARG antibody) at dilution of 1:200 (under 10x lens. Heat mediated antigen retrieval with Tris-EDTA buffer (pH 9.0).



Immunohistochemical analysis of paraffin-embedded human breast cancer tissue slide using 27808-1-AP (PARG antibody) at dilution of 1:200 (under 40x lens. Heat mediated antigen retrieval with Tris-EDTA buffer (pH 9.0).