

For Research Use Only

MRP1 Polyclonal antibody

Catalog Number: 27825-1-AP



Basic Information

Catalog Number: 27825-1-AP	GenBank Accession Number: NM_004996	Purification Method: Antigen affinity purification
Size: 150ul , Concentration: 600 µg/ml by Nanodrop;	GeneID (NCBI): 4363	Recommended Dilutions: WB 1:500-1:1000 IHC 1:50-1:500
Source: Rabbit	Full Name: ATP-binding cassette, sub-family C (CFTR/MRP), member 1	
Isotype: IgG	Calculated MW: 172 kDa	
Immunogen Catalog Number: AG27048	Observed MW: 180-190 kDa	

Applications

Tested Applications: IHC, WB, ELISA	Positive Controls:
Species Specificity: Human	WB : 37°C incubated HeLa cells, IHC : human breast cancer tissue,

Note-IHC: suggested antigen retrieval with TE buffer pH 9.0; (*) Alternatively, antigen retrieval may be performed with citrate buffer pH 6.0

Background Information

Multidrug resistant-associated protein 1 (MRP1, also known as ABCC1) is a member of the ATP-binding cassette (ABC) transporter protein superfamily, subfamily C. MRP1 is overexpressed in cancers and contributes to the occurrence of multidrug resistance (MDR). Expression of MRP1 has been considered as a negative marker for the outcome of chemotherapy. Recently MRP1 has been reported to play a crucial role in Aβ clearance at the blood-brain barrier.

Storage

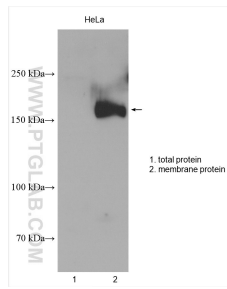
Storage:
Store at -20°C. Stable for one year after shipment.
Storage Buffer:
PBS with 0.02% sodium azide and 50% glycerol pH 7.3.
Aliquoting is unnecessary for -20°C storage

*** 20ul sizes contain 0.1% BSA

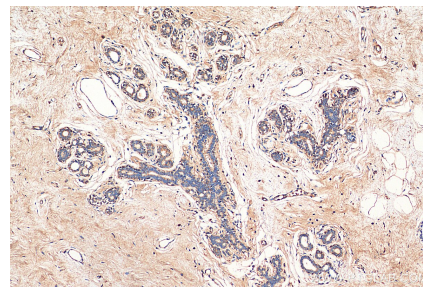
For technical support and original validation data for this product please contact:
T: 1 (888) 4PTGLAB (1-888-478-4522) (toll free in USA), or 1(312) 455-8498 (outside USA)
E: proteintech@ptglab.com
W: ptglab.com

This product is exclusively available under Proteintech Group brand and is not available to purchase from any other manufacturer.

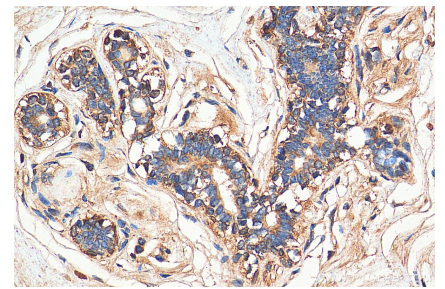
Selected Validation Data



37°C incubated HeLa cells were subjected to SDS PAGE followed by western blot with 27825-1-AP (MRP1 antibody) at dilution of 1:600 incubated at room temperature for 1.5 hours.



Immunohistochemical analysis of paraffin-embedded human breast cancer tissue slide using 27825-1-AP (ABCC1 antibody) at dilution of 1:200 (under 10x lens). Heat mediated antigen retrieval with Tris-EDTA buffer (pH 9.0).



Immunohistochemical analysis of paraffin-embedded human breast cancer tissue slide using 27825-1-AP (ABCC1 antibody) at dilution of 1:200 (under 40x lens). Heat mediated antigen retrieval with Tris-EDTA buffer (pH 9.0).