

For Research Use Only

# MTSS1L Polyclonal antibody

Catalog Number: 27832-1-AP **2 Publications**



## Basic Information

<b>Catalog Number:</b> 27832-1-AP	<b>GenBank Accession Number:</b> BC002770	<b>Purification Method:</b> Antigen affinity purification
<b>Size:</b> 150ul, Concentration: 350 µg/ml by Nanodrop and 200 µg/ml by Bradford method using BSA as the standard;	<b>GeneID (NCBI):</b> 92154	<b>Recommended Dilutions:</b> WB 1:2000-1:10000 IP 0.5-4.0 ug for IP and 1:200-1:1000 for WB
<b>Source:</b> Rabbit	<b>Full Name:</b> metastasis suppressor 1-like	<b>IHC 1:50-1:500</b> <b>IF 1:50-1:500</b>
<b>Isotype:</b> IgG	<b>Observed MW:</b> 68-70 kDa	
<b>Immunogen Catalog Number:</b> AG27216		

## Applications

<b>Tested Applications:</b> IF, IHC, IP, WB, ELISA	<b>Positive Controls:</b> WB : HEK-293T cells, HeLa cells, Jurkat cells, U-251 cells, NIH/3T3 cells, mouse brain tissue, rat brain tissue
<b>Cited Applications:</b> WB	<b>IP :</b> Jurkat cells,
<b>Species Specificity:</b> Human, mouse, rat	<b>IHC :</b> mouse brain tissue,
<b>Cited Species:</b> human	<b>IF :</b> MCF-7 cells,

**Note-IHC: suggested antigen retrieval with TE buffer pH 9.0; (\*) Alternatively, antigen retrieval may be performed with citrate buffer pH 6.0**

## Background Information

### Notable Publications

Author	Pubmed ID	Journal	Application
Wei Zhuo	35597784	Cell Discov	WB
Xiaoli Tang	31281935	Acta Biochim Biophys Sin (Shanghai)	WB

## Storage

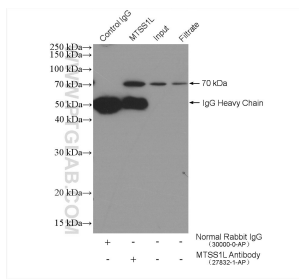
**Storage:**  
Store at -20°C. Stable for one year after shipment.  
**Storage Buffer:**  
PBS with 0.02% sodium azide and 50% glycerol pH 7.3.  
Aliquoting is unnecessary for -20°C storage

\*\*\* 20ul sizes contain 0.1% BSA

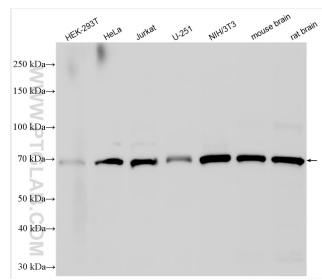
For technical support and original validation data for this product please contact:  
T: 1 (888) 4PTGLAB (1-888-478-4522) (toll free in USA), or 1(312) 455-8498 (outside USA)  
E: proteintech@ptglab.com  
W: ptglab.com

This product is exclusively available under Proteintech Group brand and is not available to purchase from any other manufacturer.

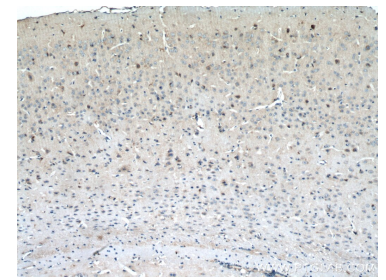
## Selected Validation Data



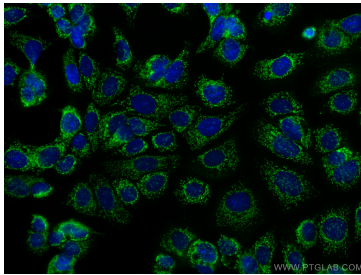
IP result of anti-MTSS1L (IP:27832-1-AP, 4 $\mu$ g; Detection:27832-1-AP 1:300) with Jurkat cells lysate 4000  $\mu$ g.



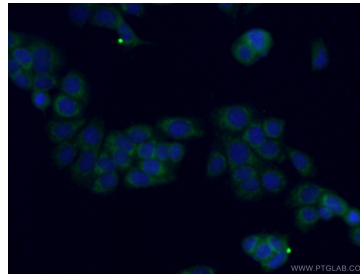
Various lysates were subjected to SDS PAGE followed by western blot with 27832-1-AP (MTSS1L antibody) at dilution of 1:5000 incubated at room temperature for 1.5 hours.



Immunohistochemical analysis of paraffin-embedded mouse brain tissue slide using 27832-1-AP (MTSS1L antibody) at dilution of 1:200 (under 10 $\times$  lens. Heat mediated antigen retrieval with Tris-EDTA buffer (pH 9.0).



Immunofluorescent analysis of (-20°C Methanol) fixed MCF-7 cells using MTSS1L antibody (27832-1-AP) at dilution of 1:200 and CoraLite®488-Conjugated AffiniPure Goat Anti-Rabbit IgG(H+L).



Immunofluorescent analysis of (-20°C Ethanol) fixed MCF-7 cells using 27832-1-AP (MTSS1L antibody) at dilution of 1:50 and Alexa Fluor 488-Conjugated AffiniPure Goat Anti-Rabbit IgG(H+L).