

For Research Use Only

# SEMA3A Polyclonal antibody

Catalog Number: 27836-1-AP

4 Publications



## Basic Information

### Catalog Number:

27836-1-AP

### Size:

150ul, Concentration: 900 ug/ml by Nanodrop and 500 ug/ml by Bradford method using BSA as the standard;

### Source:

Rabbit

### Isotype:

IgG

### Immunogen Catalog Number:

AG27173

### GenBank Accession Number:

BC111416

### GeneID (NCBI):

10371

### UNIPROT ID:

Q14563

### Full Name:

sema domain, immunoglobulin domain (Ig), short basic domain, secreted, (semaphorin) 3A

### Calculated MW:

771 aa, 89 kDa

### Observed MW:

89 and 65 kDa

### Purification Method:

Antigen affinity purification

### Recommended Dilutions:

WB 1:500-1:1000

IF/ICC 1:200-1:800

## Applications

### Tested Applications:

WB, IF/ICC, ELISA

### Cited Applications:

WB

### Species Specificity:

Human

### Cited Species:

human, rat

### Positive Controls:

WB : PC-12 cells, SH-SY5Y cells

IF/ICC : HeLa cells,

## Background Information

SEMA3A (Semaphorin 3A), a class-3 semaphorin signaling protein, is involved in cell signaling with PlexinA1 and Neuropilin-1 (NRP1) receptors and it is responsible for recruiting dendritic cells into lymphatics. It's widely expressed in different tissues (PMID:10766232). SEMA3A has been shown to exert osteoprotective effects, characterized by increasing bone formation while inhibiting the activation of osteoclast precursor cells (PMID:36598593). However, SEMA3A also modulates the immune system. SEMA3A expression in a myocardial infarct area enhances macrophage polarization and inhibits monocyte migration into the lesion area (PMID:28540528).

## Notable Publications

Author	Pubmed ID	Journal	Application
Xiaochi Chang	35037251	J Periodontal Res	WB
Xianbin Wang	38373630	Neurosci Lett	WB
Jin Wu	37516879	J Orthop Surg Res	WB

## Storage

### Storage:

Store at -20°C. Stable for one year after shipment.

### Storage Buffer:

PBS with 0.02% sodium azide and 50% glycerol pH 7.3.

Aliquoting is unnecessary for -20°C storage

\*\*\* 20ul sizes contain 0.1% BSA

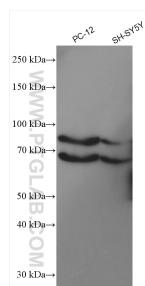
For technical support and original validation data for this product please contact:

T: 1 (888) 4PTGLAB (1-888-478-4522) (toll free in USA), or 1(312) 455-8498 (outside USA)

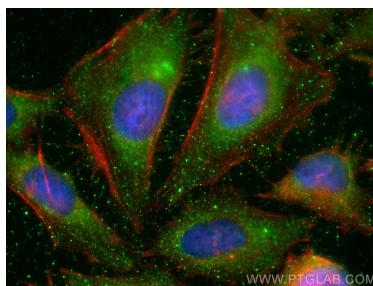
E: [proteintech@ptglab.com](mailto:proteintech@ptglab.com)  
W: [ptglab.com](http://ptglab.com)

This product is exclusively available under Proteintech Group brand and is not available to purchase from any other manufacturer.

## Selected Validation Data



Various lysates were subjected to SDS PAGE followed by western blot with 27836-1-AP (SEMA3A antibody) at dilution of 1:600 incubated at room temperature for 1.5 hours.



Immunofluorescent analysis of (-20°C Ethanol) fixed HeLa cells using SEMA3A antibody (27836-1-AP) at dilution of 1:400 and CoraLite® 488-Conjugated Goat Anti-Rabbit IgG(H+L), CL594-phalloidin (red).