

For Research Use Only

# ABCC6 Polyclonal antibody

Catalog Number: 27848-1-AP

5 Publications



## Basic Information

<b>Catalog Number:</b> 27848-1-AP	<b>GenBank Accession Number:</b> BC131732	<b>Purification Method:</b> Antigen affinity purification
<b>Size:</b> 150ul , Concentration: 500 ug/ml by Nanodrop and 333 ug/ml by Bradford method using BSA as the standard;	<b>GeneID (NCBI):</b> 368	<b>Recommended Dilutions:</b> WB 1:500-1:2000 IHC 1:50-1:500
<b>Source:</b> Rabbit	<b>UNIPROT ID:</b> O95255	
<b>Isotype:</b> IgG	<b>Full Name:</b> ATP-binding cassette, sub-family C (CFTR/MRP), member 6	
<b>Immunogen Catalog Number:</b> AG18640	<b>Calculated MW:</b> 1503 aa, 165 kDa	
	<b>Observed MW:</b> 165 kDa and 96 kDa	

## Applications

<b>Tested Applications:</b> WB, IHC, ELISA	<b>Positive Controls:</b>
<b>Cited Applications:</b> WB, IF, IHC	<b>WB :</b> mouse liver tissue,
<b>Species Specificity:</b> Human, Mouse	<b>IHC :</b> mouse liver tissue,
<b>Cited Species:</b> human	

**Note-IHC: suggested antigen retrieval with TE buffer pH 9.0; (\*) Alternatively, antigen retrieval may be performed with citrate buffer pH 6.0**

## Background Information

The ATP-binding cassette transporter 6 (ABCC6) gene, also named as MRP6, is a cellular transmembrane protein transporter and belongs to ATP-binding cassette (ABC) family. ABCC6 is an ATP-dependent transporter contains two ATP-binding domains. It is mainly found in the liver, the proximal tubules of the kidneys and the intestines. ABCC6 is involved in a pathway of extracellular nucleotide metabolism and the regulation of tissue calcification. Mutations of ABCC6 leads to pseudoxanthoma elasticum (PXE) which is a rare autosomal recessive disorder. Mutations of ABCC6 can also lead generalized arterial calcification of infancy-2 (GACI2). 27848-1-AP detects two isoforms of ABCC6 protein around 165 kDa and 96 kDa in SDS-PAGE.(PMID:28891970, 29709427, 29662086, 15888484)

## Notable Publications

Author	Pubmed ID	Journal	Application
Yuan Liu	36497052	Cells	WB,IHC,IF
Hao Wang	31289473	Oncol Lett	WB
Bowen Li	35387434	Front Cardiovasc Med	IF

## Storage

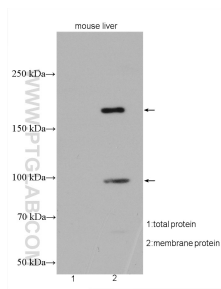
**Storage:**  
Store at -20°C. Stable for one year after shipment.  
**Storage Buffer:**  
PBS with 0.02% sodium azide and 50% glycerol pH 7.3.  
Aliquoting is unnecessary for -20°C storage

\*\*\* 20ul sizes contain 0.1% BSA

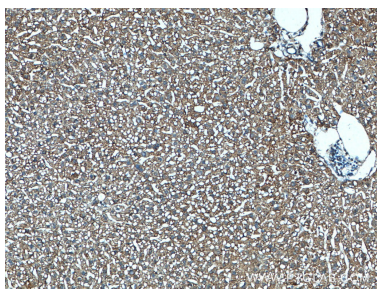
For technical support and original validation data for this product please contact:  
T: 1 (888) 4PTGLAB (1-888-478-4522) (toll free in USA), or 1(312) 455-8498 (outside USA)  
E: proteintech@ptglab.com  
W: ptglab.com

This product is exclusively available under Proteintech Group brand and is not available to purchase from any other manufacturer.

## Selected Validation Data



mouse brain tissue were subjected to SDS PAGE followed by western blot with 27848-1-AP (ABCC6 antibody) at dilution of 1:2000 incubated at room temperature for 1.5 hours.



Immunohistochemical analysis of paraffin-embedded mouse liver tissue slide using 27848-1-AP (ABCC6 antibody) at dilution of 1:200 (under 10x lens). Heat mediated antigen retrieval with Tris-EDTA buffer (pH 9.0).