

For Research Use Only

# SMIM1 Polyclonal antibody

Catalog Number: 27849-1-AP

1 Publications



## Basic Information

Catalog Number:

27849-1-AP

Size:

150ul, Concentration: 800 ug/ml by Nanodrop and 433 ug/ml by Bradford method using BSA as the standard;

Source:

Rabbit

Isotype:

IgG

Immunogen Catalog Number:

AG27028

GenBank Accession Number:

BC146957

GeneID (NCBI):

388588

UNIPROT ID:

B2RUZ4

Full Name:

hypothetical LOC388588

Observed MW:

9 kDa

Purification Method:

Antigen affinity purification

Recommended Dilutions:

WB 1:1000-1:4000

## Applications

Tested Applications:

WB, ELISA

Cited Applications:

WB

Species Specificity:

Human, Mouse

Cited Species:

human

Positive Controls:

WB : HEK-293 cells, mouse kidney tissue, mouse testis tissue

## Background Information

Small integral membrane protein 1 (SMIM1) is a type II transmembrane phosphoprotein and displays the Vel blood group antigen at its carboxyl-terminus. SMIM1 is highly expressed in hematopoietic cells. It is associated with a variety of immune responses and plays an important role in RBC differentiation. SMIM1 can be used as a potential biomarker for the diagnosis of IDD (PMID: 30906890; 26452714).

## Notable Publications

Author	Pubmed ID	Journal	Application
Jiaxuan Yang	39021420	Transfus Med Hemother	WB

## Storage

Storage:

Store at -20°C. Stable for one year after shipment.

Storage Buffer:

PBS with 0.02% sodium azide and 50% glycerol pH 7.3.

Aliquoting is unnecessary for -20°C storage

\*\*\* 20ul sizes contain 0.1% BSA

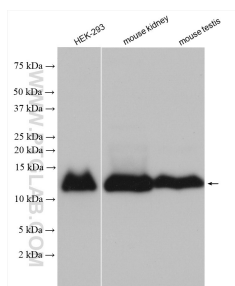
For technical support and original validation data for this product please contact:

T: 1 (888) 4PTGLAB (1-888-478-4522) (toll free in USA), or 1(312) 455-8498 (outside USA)

E: [proteintech@ptglab.com](mailto:proteintech@ptglab.com)  
W: [ptglab.com](http://ptglab.com)

This product is exclusively available under Proteintech Group brand and is not available to purchase from any other manufacturer.

## Selected Validation Data



Various lysates were subjected to SDS PAGE followed by western blot with 27849-1-AP (SMIM1 antibody) at dilution of 1:2000 incubated at room temperature for 1.5 hours.