

For Research Use Only

Titin Polyclonal antibody

Catalog Number: 27867-1-AP

6 Publications



Basic Information

Catalog Number:

27867-1-AP

Size:

150ul , Concentration: 700 ug/ml by Nanodrop;

Source:

Rabbit

Isotype:

IgG

Immunogen Catalog Number:

AG27496

GenBank Accession Number:

NM_001256850

GeneID (NCBI):

7273

UNIPROT ID:

Q8WZ42

Full Name:

titin

Calculated MW:

3816 kDa

Purification Method:

Antigen affinity purification

Recommended Dilutions:

IHC 1:200-1:800

IF-P 1:50-1:500

IF/ICC 1:200-1:800

Applications

Tested Applications:

IHC, IF/ICC, IF-P, ELISA

Cited Applications:

IF

Species Specificity:

human, mouse

Cited Species:

human, mouse

Note-IHC: suggested antigen retrieval with TE buffer pH 9.0; (*) Alternatively, antigen retrieval may be performed with citrate buffer pH 6.0

Positive Controls:

IHC : mouse heart tissue, mouse skeletal muscle tissue

IF-P : mouse skeletal muscle tissue, mouse heart tissue

IF/ICC : NIH/3T3 cells,

Background Information

Titin, or connectin, is a giant muscle protein expressed in the cardiac and skeletal muscles that spans half of the sarcomere from Z line to M line. It plays a key role in muscle contraction and relaxation, maintaining the structural integrity of the myotome (PMID: 11846417). Mutations in Titin are associated with familial hypertrophic cardiomyopathy 9, and autoantibodies to titin are produced in patients with the autoimmune disease scleroderma (PMID: 15802564).

Notable Publications

Author	Pubmed ID	Journal	Application
Jie Wang	34783308	Elife	IF
Sun-Ho Lee	34952434	Stem Cell Res	IF
Shelby Dahlen	39746869	Physiol Rep	IF

Storage

Storage:

Store at -20°C. Stable for one year after shipment.

Storage Buffer:

PBS with 0.02% sodium azide and 50% glycerol pH 7.3.

Aliquoting is unnecessary for -20°C storage

*** 20ul sizes contain 0.1% BSA

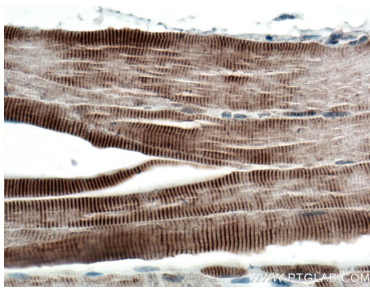
For technical support and original validation data for this product please contact:

T: 1 (888) 4PTGLAB (1-888-478-4522) (toll free in USA), or 1(312) 455-8498 (outside USA)

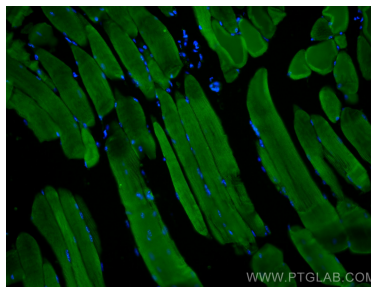
E: proteintech@ptglab.com
W: ptglab.com

This product is exclusively available under Proteintech Group brand and is not available to purchase from any other manufacturer.

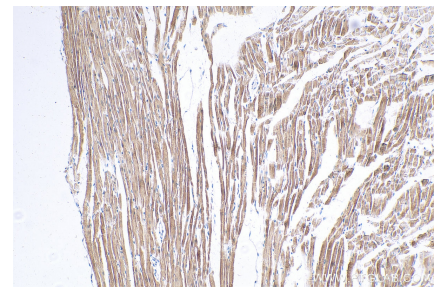
Selected Validation Data



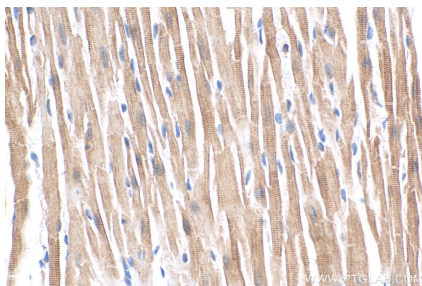
Immunohistochemical analysis of paraffin-embedded mouse skeletal muscle tissue slide using 27867-1-AP (Titin antibody) at dilution of 1:200 (under 40x lens). Heat mediated antigen retrieval with Tris-EDTA buffer (pH 9.0).



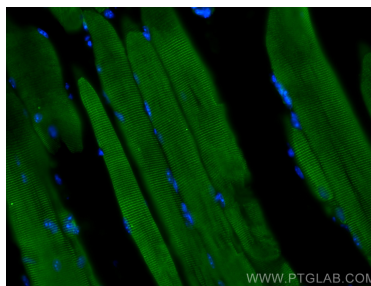
Immunofluorescent analysis of (4% PFA) fixed mouse skeletal muscle tissue using Titin antibody (27867-1-AP) at dilution of 1:200 and CoraLite®488-Conjugated AffiniPure Goat Anti-Rabbit IgG(H+L).



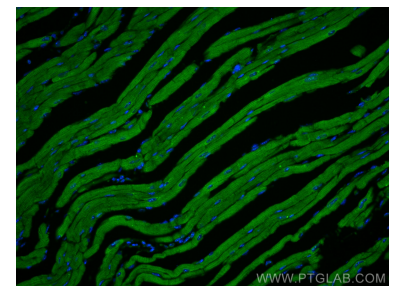
Immunohistochemical analysis of paraffin-embedded mouse heart tissue slide using 27867-1-AP (Titin antibody) at dilution of 1:400 (under 10x lens). Heat mediated antigen retrieval with Tris-EDTA buffer (pH 9.0).



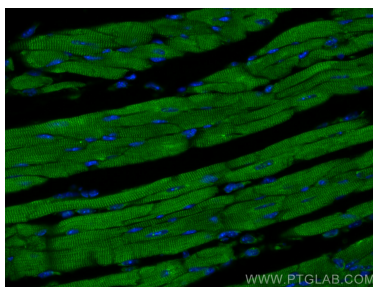
Immunohistochemical analysis of paraffin-embedded mouse heart tissue slide using 27867-1-AP (Titin antibody) at dilution of 1:400 (under 40x lens). Heat mediated antigen retrieval with Tris-EDTA buffer (pH 9.0).



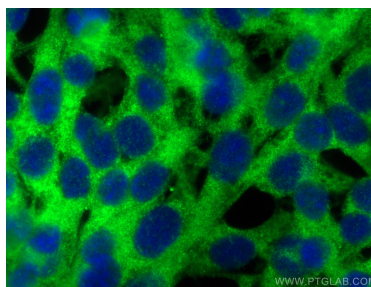
Immunofluorescent analysis of (4% PFA) fixed mouse skeletal muscle tissue using Titin antibody (27867-1-AP) at dilution of 1:200 and CoraLite®488-Conjugated AffiniPure Goat Anti-Rabbit IgG(H+L).



Immunofluorescent analysis of (4% PFA) fixed mouse heart tissue using Titin antibody (27867-1-AP) at dilution of 1:200 and CoraLite®488-Conjugated AffiniPure Goat Anti-Rabbit IgG(H+L).



Immunofluorescent analysis of (4% PFA) fixed mouse heart tissue using Titin antibody (27867-1-AP) at dilution of 1:200 and CoraLite®488-Conjugated AffiniPure Goat Anti-Rabbit IgG(H+L).



Immunofluorescent analysis of (-20°C Ethanol) fixed NIH/3T3 cells using Titin antibody (27867-1-AP) at dilution of 1:400 and CoraLite®488-Conjugated AffiniPure Goat Anti-Rabbit IgG(H+L).