

For Research Use Only

Endothelin 3 Polyclonal antibody

Catalog Number: 27871-1-AP



Basic Information

| | | |
|---|--|--|
| Catalog Number: 27871-1-AP | GenBank Accession Number: BC053866 | Purification Method: Antigen affinity purification |
| Size: 150ul , Concentration: 550 µg/ml by Nanodrop; | GeneID (NCBI): 1908 | Recommended Dilutions: WB 1:500-1:1000 IHC 1:50-1:500 |
| Source: Rabbit | Full Name: endothelin 3 | |
| Isotype: IgG | Observed MW: 28 kDa | |
| Immunogen Catalog Number: AG27393 | | |

Applications

Tested Applications:

IHC, WB, ELISA

Species Specificity:

Human, mouse, rat

Note-IHC: suggested antigen retrieval with TE buffer pH 9.0; (*) Alternatively, antigen retrieval may be performed with citrate buffer pH 6.0

Positive Controls:

WB : mouse pancreas tissue, rat pancreas tissue

IHC : human thyroid cancer tissue, human oesophagus cancer tissue

Background Information

Endothelin 3 (EDN3) is also named as ET-3 and Preproendothelin-3 (PPET3). Endothelin 3 belongs to the endothelin/sarafotoxin family. It reported downregulation of EDN3 as a result of methylation of its promoter in breast cancer, and EDN3 level was also decreased in cervical cancer (PMID: 36542159). ET-3 is the most abundant ET peptide in the rat brain, mainly localized to neurons and glia of the neostriatum, hypothalamic nuclei, hippocampus, and Purkinje cells of the cerebellum and medulla oblongata (PMID: 32589590).

Storage

Storage:

Store at -20°C. Stable for one year after shipment.

Storage Buffer:

PBS with 0.02% sodium azide and 50% glycerol pH 7.3.

Aliquoting is unnecessary for -20°C storage

*** 20ul sizes contain 0.1% BSA

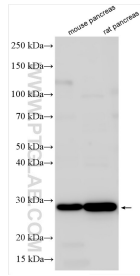
For technical support and original validation data for this product please contact:

T: 1 (888) 4PTGLAB (1-888-478-4522) (toll free in USA), or 1(312) 455-8498 (outside USA)

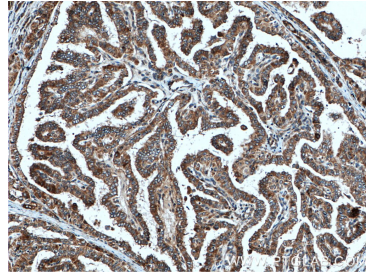
E: proteintech@ptglab.com
W: ptglab.com

This product is exclusively available under Proteintech Group brand and is not available to purchase from any other manufacturer.

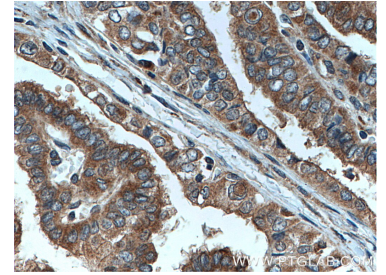
Selected Validation Data



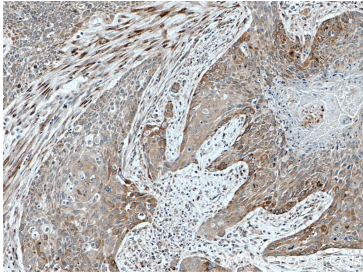
Various lysates were subjected to SDS PAGE followed by western blot with 27871-1-AP (Endothelin 3 antibody) at dilution of 1:600 incubated at room temperature for 1.5 hours.



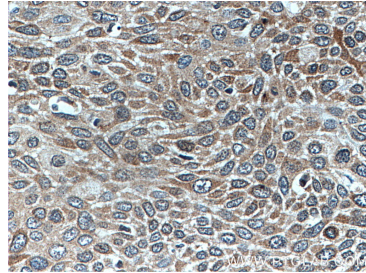
Immunohistochemical analysis of paraffin-embedded human thyroid cancer tissue slide using 27871-1-AP (EDN3 antibody) at dilution of 1:200 (under 10x lens. Heat mediated antigen retrieval with Tris-EDTA buffer (pH 9.0).



Immunohistochemical analysis of paraffin-embedded human thyroid cancer tissue slide using 27871-1-AP (EDN3 antibody) at dilution of 1:200 (under 40x lens. Heat mediated antigen retrieval with Tris-EDTA buffer (pH 9.0).



Immunohistochemical analysis of paraffin-embedded human oesophagus cancer tissue slide using 27871-1-AP (EDN3 antibody) at dilution of 1:200 (under 10x lens. Heat mediated antigen retrieval with Tris-EDTA buffer (pH 9.0).



Immunohistochemical analysis of paraffin-embedded human oesophagus cancer tissue slide using 27871-1-AP (EDN3 antibody) at dilution of 1:200 (under 0x lens. Heat mediated antigen retrieval with Tris-EDTA buffer (pH 9.0).