

For Research Use Only

Endothelin 3 Polyclonal antibody, PBS Only

Catalog Number: 27871-1-PBS



Basic Information

Catalog Number:

27871-1-PBS

Size:

100ug, Concentration: 1 mg/ml by Nanodrop;

Source:

Rabbit

Isotype:

IgG

Immunogen Catalog Number:

AG27393

GenBank Accession Number:

BC053866

GeneID (NCBI):

1908

UNIPROT ID:

P14138

Full Name:

endothelin 3

Observed MW:

28 kDa

Purification Method:

Antigen affinity purification

Applications

Tested Applications:

WB, IHC, IF/ICC, Indirect ELISA

Species Specificity:

human, mouse, rat

Background Information

Endothelin 3 (EDN3) is also named as ET-3 and Preproendothelin-3 (PPET3). Endothelin 3 belongs to the endothelin/sarafotoxin family. It reported downregulation of EDN3 as a result of methylation of its promoter in breast cancer, and EDN3 level was also decreased in cervical cancer (PMID: 36542159). ET-3 is the most abundant ET peptide in the rat brain, mainly localized to neurons and glia of the neostriatum, hypothalamic nuclei, hippocampus, and Purkinje cells of the cerebellum and medulla oblongata (PMID: 32589590).

Storage

Storage:

Store at -80°C.

Storage Buffer:

PBS only, pH7.3

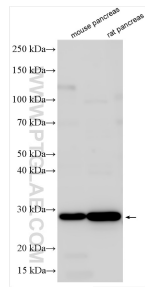
For technical support and original validation data for this product please contact:

T: 1 (888) 4PTGLAB (1-888-478-4522) (toll free in USA), or 1(312) 455-8498 (outside USA)

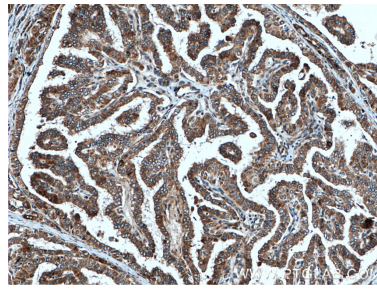
E: proteintech@ptglab.com
W: ptglab.com

This product is exclusively available under Proteintech Group brand and is not available to purchase from any other manufacturer.

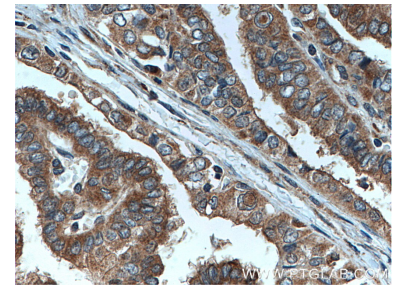
Selected Validation Data



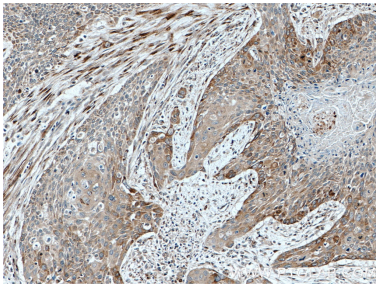
Various lysates were subjected to SDS PAGE followed by western blot with 27871-1-AP (Endothelin 3 antibody) at dilution of 1:600 incubated at room temperature for 1.5 hours. This data was developed using the same antibody clone with 27871-1-PBS in a different storage buffer formulation.



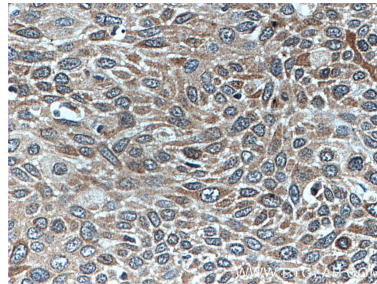
Immunohistochemical analysis of paraffin-embedded human thyroid cancer tissue slide using 27871-1-AP (EDN3 antibody) at dilution of 1:200 (under 10x lens. Heat mediated antigen retrieval with Tris-EDTA buffer (pH 9.0). This data was developed using the same antibody clone with 27871-1-PBS in a different storage buffer formulation.



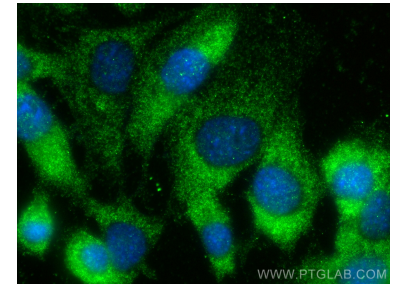
Immunohistochemical analysis of paraffin-embedded human thyroid cancer tissue slide using 27871-1-AP (EDN3 antibody) at dilution of 1:200 (under 40x lens. Heat mediated antigen retrieval with Tris-EDTA buffer (pH 9.0). This data was developed using the same antibody clone with 27871-1-PBS in a different storage buffer formulation.



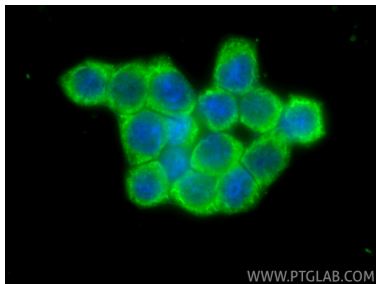
Immunohistochemical analysis of paraffin-embedded human oesophagus cancer tissue slide using 27871-1-AP (EDN3 antibody) at dilution of 1:200 (under 10x lens. Heat mediated antigen retrieval with Tris-EDTA buffer (pH 9.0). This data was developed using the same antibody clone with 27871-1-PBS in a different storage buffer formulation.



Immunohistochemical analysis of paraffin-embedded human oesophagus cancer tissue slide using 27871-1-AP (EDN3 antibody) at dilution of 1:200 (under 0x lens. Heat mediated antigen retrieval with Tris-EDTA buffer (pH 9.0). This data was developed using the same antibody clone with 27871-1-PBS in a different storage buffer formulation.



Immunofluorescent analysis of (-20°C Ethanol) fixed NIH/3T3 cells using Endothelin 3 antibody (27871-1-AP) at dilution of 1:200 and Multi-rAb CoraLite® Plus 488-Goat Anti-Rabbit Recombinant Secondary Antibody (H+L) (RGAR002). This data was developed using the same antibody clone with 27871-1-PBS in a different storage buffer formulation.



Immunofluorescent analysis of (-20°C Ethanol) fixed BxPC-3 cells using Endothelin 3 antibody (27871-1-AP) at dilution of 1:400 and CoraLite® 488-Conjugated Goat Anti-Rabbit IgG(H+L) (SA00013-2). This data was developed using the same antibody clone with 27871-1-PBS in a different storage buffer formulation.