

For Research Use Only

# Gamma Catenin Polyclonal antibody

Catalog Number: 27872-1-AP

3 Publications



## Basic Information

Catalog Number:

27872-1-AP

Size:

150ul, Concentration: 350 ug/ml by Nanodrop;

Source:

Rabbit

Isotype:

IgG

Immunogen Catalog Number:

AG27394

GenBank Accession Number:

BC000441

GeneID (NCBI):

3728

UNIPROT ID:

P14923

Full Name:

junction plakoglobin

Observed MW:

82 kDa

Purification Method:

Antigen affinity purification

Recommended Dilutions:

WB 1:5000-1:50000

IHC 1:2000-1:8000

IF/ICC 1:200-1:800

## Applications

Tested Applications:

WB, IHC, IF/ICC, ELISA

Cited Applications:

WB, IF

Species Specificity:

Human, mouse, rat

Cited Species:

human

**Note-IHC: suggested antigen retrieval with TE buffer pH 9.0; (\*) Alternatively, antigen retrieval may be performed with citrate buffer pH 6.0**

Positive Controls:

WB: HT-29 cells, HUVEC cells, T-47D cells, mouse heart tissue, MCF-7 cells, rat heart tissue

IHC: human breast cancer tissue,

IF/ICC: MCF-7 cells, A431 cells, HeLa cells

## Notable Publications

Author	Pubmed ID	Journal	Application
Yizhi Xiao	32857323	Cell Oncol (Dordr)	WB
Jueyao Zou	38654231	BMC Cancer	WB,IF
Yining Liu	38096938	Int J Biol Macromol	WB,IF

## Storage

Storage:

Store at -20°C. Stable for one year after shipment.

Storage Buffer:

PBS with 0.02% sodium azide and 50% glycerol pH 7.3.

Aliquoting is unnecessary for -20°C storage

\*\*\* 20ul sizes contain 0.1% BSA

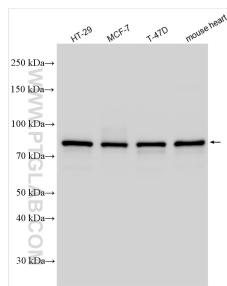
For technical support and original validation data for this product please contact:

T: 1 (888) 4PTGLAB (1-888-478-4522) (toll free in USA), or 1(312) 455-8498 (outside USA)

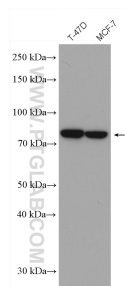
E: [proteintech@ptglab.com](mailto:proteintech@ptglab.com)  
W: [ptglab.com](http://ptglab.com)

This product is exclusively available under Proteintech Group brand and is not available to purchase from any other manufacturer.

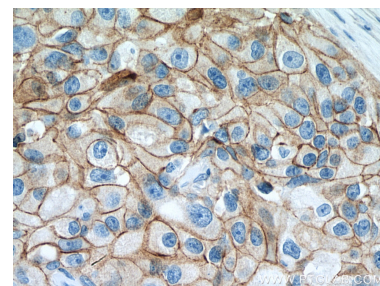
## Selected Validation Data



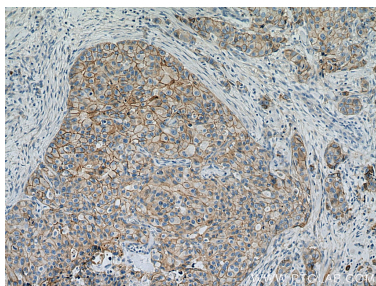
Various lysates were subjected to SDS PAGE followed by western blot with 27872-1-AP (Gamma Catenin antibody) at dilution of 1:20000 incubated at room temperature for 1.5 hours.



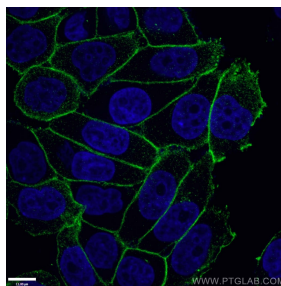
Various lysates were subjected to SDS PAGE followed by western blot with 27872-1-AP (gamma catenin antibody) at dilution of 1:20000 incubated at room temperature for 1.5 hours.



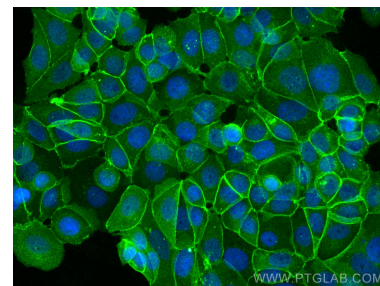
Immunohistochemical analysis of paraffin-embedded human breast cancer tissue slide using 27872-1-AP (Gamma Catenin antibody) at dilution of 1:4000 (under 40x lens). Heat mediated antigen retrieval with Tris-EDTA buffer (pH 9.0).



Immunohistochemical analysis of paraffin-embedded human breast cancer tissue slide using 27872-1-AP (Gamma Catenin antibody) at dilution of 1:4000 (under 10x lens). Heat mediated antigen retrieval with Tris-EDTA buffer (pH 9.0).



Immunofluorescent analysis of (-20°C Ethanol) fixed HeLa cells using 27872-1-AP (gamma catenin antibody) at dilution of 1:100 and Alexa Fluor 488-conjugated Goat Anti-Rabbit IgG(H+L).



Immunofluorescent analysis of (-20°C Methanol) fixed MCF-7 cells using Gamma Catenin antibody (27872-1-AP) at dilution of 1:400 and CoraLite®488-Conjugated Goat Anti-Rabbit IgG(H+L).