

For Research Use Only

# MDM2 Polyclonal antibody

Catalog Number: 27883-1-AP

Featured Product

13 Publications



## Basic Information

<b>Catalog Number:</b> 27883-1-AP	<b>GenBank Accession Number:</b> NM_001145337.2	<b>Purification Method:</b> Antigen affinity purification
<b>Size:</b> 150ul, Concentration: 700 µg/ml by Nanodrop;	<b>GeneID (NCBI):</b> 4193	<b>Recommended Dilutions:</b> WB 1:500-1:3000
<b>Source:</b> Rabbit	<b>Full Name:</b> Mdm2 p53 binding protein homolog (mouse)	
<b>Isotype:</b> IgG	<b>Calculated MW:</b> 55 kDa	
<b>Immunogen Catalog Number:</b> AG27255	<b>Observed MW:</b> 75-85 kDa	

## Applications

<b>Tested Applications:</b> FC, WB, ELISA	<b>Positive Controls:</b> WB : MCF-7 cells, A431 cells, T-47D cells
<b>Cited Applications:</b> IF, IHC, WB	
<b>Species Specificity:</b> Human	
<b>Cited Species:</b> human, rat, mouse	

## Background Information

MDM2, also known as HDM2, is a protein of the E3 ubiquitin-ligase family. MDM2 is recognized as a proto-oncogene and is over-expressed in a wide range of human malignancies including soft tissue carcinomas and breast cancer. MDM2 can bind to the p53 tumor suppressor protein with high affinity, and negatively regulates p53 by mediating its ubiquitination and proteosomal degradation (PMID: 17000718). MDM2 has some isoforms with calculated molecular mass of 25-55kD, but always can be detected as 90-97kD. In addition to full length MDM2, two lower bands (85kD and 75kD) are often observed which are likely to be produced by translation initiation at methionine codons 50 and 60. Another isoform of MDM2 is often observed as 57-60kD in cell lines which is indeed a caspase cleavage product of MDM2 at residue 361 (PMID: 19565011, 9840926, 7689721).

## Notable Publications

Author	Pubmed ID	Journal	Application
Mingzhe Zheng	36434180	Oncogene	WB,IHC,IF
Hidemichi Kouzu	35316214	J Clin Invest	WB
Lei Shi	35072515	Mol Cell Biol	WB

## Storage

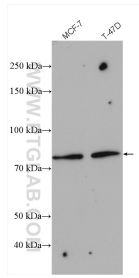
**Storage:**  
Store at -20°C. Stable for one year after shipment.  
**Storage Buffer:**  
PBS with 0.02% sodium azide and 50% glycerol pH 7.3.  
Aliquoting is unnecessary for -20°C storage

\*\*\* 20ul sizes contain 0.1% BSA

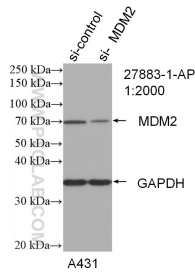
For technical support and original validation data for this product please contact:  
T: 1 (888) 4PTGLAB (1-888-478-4522) (toll free in USA), or 1(312) 455-8498 (outside USA)  
E: proteintech@ptglab.com  
W: ptglab.com

This product is exclusively available under Proteintech Group brand and is not available to purchase from any other manufacturer.

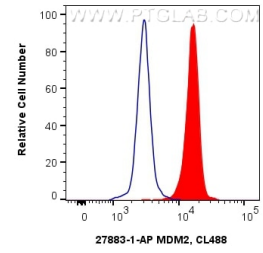
## Selected Validation Data



Various lysates were subjected to SDS PAGE followed by western blot with 27883-1-AP (MDM2 antibody) at dilution of 1:2000 incubated at room temperature for 1.5 hours.



WB result of MDM2 antibody (27883-1-AP; 1:2000; incubated at room temperature for 1.5 hours) with sh-Control and sh-MDM2 transfected A431 cells.



1X10<sup>6</sup> HeLa cells were intracellularly stained with 0.4 ug Anti-Human MDM2 (27883-1-AP) and CoraLite@488-Conjugated AffiniPure Goat Anti-Rabbit IgG(H+L) at dilution 1:1000 (red), or 0.4 ug Rabbit IgG control Rabbit PolyAb (30000-O-AP, Clone: ) (blue). Cells were fixed and permeabilized with True-Nuclear Transcription Factor Buffer Set.