

For Research Use Only

# GRIA1 Polyclonal antibody

Catalog Number: 27885-1-AP



## Basic Information

**Catalog Number:**

27885-1-AP

**Size:**

150ul , Concentration: 800 ug/ml by Nanodrop;

**Source:**

Rabbit

**Isotype:**

IgG

**Immunogen Catalog Number:**

AG27295

**GenBank Accession Number:**

BC111734

**GeneID (NCBI):**

2890

**UNIPROT ID:**

P42261

**Full Name:**

glutamate receptor, ionotropic, AMPA 1

**Calculated MW:**

906 aa, 102 kDa

**Observed MW:**

102 kDa

**Purification Method:**

Antigen affinity purification

**Recommended Dilutions:**

WB 1:1000-1:4000

## Applications

**Tested Applications:**

WB, ELISA

**Species Specificity:**

Human, Mouse, Pig, rat

**Positive Controls:**

WB : mouse brain tissue, rat brain tissue, pig brain tissue

## Background Information

Glutamate receptors are the predominant excitatory neurotransmitter receptors in the mammalian brain and are activated in a variety of normal neurophysiologic processes. These receptors are heteromeric protein complexes with multiple subunits, each possessing transmembrane regions, and all arranged to form a ligand-gated ion channel. The classification of glutamate receptors is based on their activation by different pharmacologic agonists. This gene belongs to a family of alpha-amino-3-hydroxy-5-methyl-4-isoxazole propionate (AMPA) receptors.

## Storage

**Storage:**

Store at -20°C. Stable for one year after shipment.

**Storage Buffer:**

PBS with 0.02% sodium azide and 50% glycerol pH 7.3.

Aliquoting is unnecessary for -20°C storage

\*\*\* 20ul sizes contain 0.1% BSA

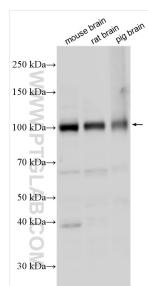
For technical support and original validation data for this product please contact:

T: 1 (888) 4PTGLAB (1-888-478-4522) (toll free in USA), or 1(312) 455-8498 (outside USA)

E: [proteintech@ptglab.com](mailto:proteintech@ptglab.com)  
W: [ptglab.com](http://ptglab.com)

This product is exclusively available under Proteintech Group brand and is not available to purchase from any other manufacturer.

## Selected Validation Data



Various lysates were subjected to SDS PAGE followed by western blot with 27885-1-AP (GRIA1 antibody) at dilution of 1:2000 incubated at room temperature for 1.5 hours.