

For Research Use Only

# NAP1L4 Polyclonal antibody

Catalog Number: 27889-1-AP

Featured Product



## Basic Information

Catalog Number:

27889-1-AP

Size:

150ul, Concentration: 600 ug/ml by Nanodrop and 400 ug/ml by Bradford method using BSA as the standard;

Source:

Rabbit

Isotype:

IgG

Immunogen Catalog Number:

AG27469

GenBank Accession Number:

BC022090

GeneID (NCBI):

4676

UNIPROT ID:

Q99733

Full Name:

nucleosome assembly protein 1-like

4

Calculated MW:

375 aa, 43 kDa

Observed MW:

52 kDa

Purification Method:

Antigen affinity purification

Recommended Dilutions:

WB 1:500-1:2000

## Applications

Tested Applications:

WB, ELISA

Species Specificity:

Human, mouse, rat

Positive Controls:

WB: HeLa cells, HuH-7 cells, mouse heart tissue, mouse testis tissue, rat heart tissue, U2OS cells

## Background Information

NAP1L4 is a member of the nucleosome assembly protein (NAP) family which can interact with both core and linker histones. It can shuttle between the cytoplasm and nucleus, suggesting a role as a histone chaperone. This gene is one of several located near the imprinted gene domain of 11p15.5, an important tumor-suppressor gene region. Alterations in this region have been associated with the Beckwith-Wiedemann syndrome, Wilms tumor, rhabdomyosarcoma, adrenocortical carcinoma, and lung, ovarian, and breast cancer.

## Storage

Storage:

Store at -20°C. Stable for one year after shipment.

Storage Buffer:

PBS with 0.02% sodium azide and 50% glycerol pH 7.3.

Aliquoting is unnecessary for -20°C storage

\*\*\* 20ul sizes contain 0.1% BSA

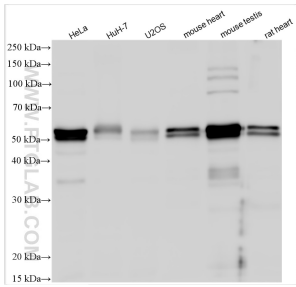
For technical support and original validation data for this product please contact:

T: 1 (888) 4PTGLAB (1-888-478-4522) (toll free in USA), or 1(312) 455-8498 (outside USA)

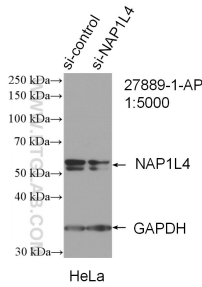
E: [proteintech@ptglab.com](mailto:proteintech@ptglab.com)  
W: [ptglab.com](http://ptglab.com)

This product is exclusively available under Proteintech Group brand and is not available to purchase from any other manufacturer.

## Selected Validation Data



Various lysates were subjected to SDS PAGE followed by western blot with 27889-1-AP (NAP1L4 antibody) at dilution of 1:1000 incubated at room temperature for 1.5 hours.



WB result of NAP1L4 antibody (27889-1-AP; 1:5000; incubated at room temperature for 1.5 hours) with sh-Control and sh-NAP1L4 transfected HeLa cells.