

For Research Use Only

# PBLD Polyclonal antibody

Catalog Number: 27891-1-AP



## Basic Information

<b>Catalog Number:</b> 27891-1-AP	<b>GenBank Accession Number:</b> BC009738	<b>Purification Method:</b> Antigen affinity purification
<b>Size:</b> 150ul, Concentration: 800 µg/ml by Nanodrop and 400 µg/ml by Bradford method using BSA as the standard;	<b>GeneID (NCBI):</b> 64081	<b>Recommended Dilutions:</b> WB 1:1000-1:5000 IHC 1:300-1:1200
<b>Source:</b> Rabbit	<b>Full Name:</b> phenazine biosynthesis-like protein domain containing	
<b>Isotype:</b> IgG	<b>Observed MW:</b> 30-32 kDa	
<b>Immunogen Catalog Number:</b> AG23591		

## Applications

<b>Tested Applications:</b> IHC, WB, ELISA	<b>Positive Controls:</b>
<b>Species Specificity:</b> Human, Mouse	<b>WB:</b> mouse liver tissue, mouse kidney tissue
<b>Note-IHC:</b> suggested antigen retrieval with <b>TE buffer pH 9.0; (*) Alternatively, antigen retrieval may be performed with citrate buffer pH 6.0</b>	<b>IHC:</b> human kidney tissue,

## Background Information

### Storage

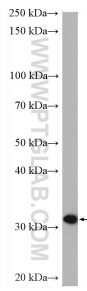
**Storage:**  
Store at -20°C. Stable for one year after shipment.  
**Storage Buffer:**  
PBS with 0.02% sodium azide and 50% glycerol pH 7.3.  
Aliquoting is unnecessary for -20°C storage

\*\*\* 20ul sizes contain 0.1% BSA

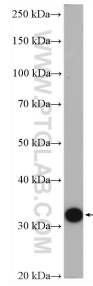
For technical support and original validation data for this product please contact:  
T: 1 (888) 4PTGLAB (1-888-478-4522) (toll free in USA), or 1(312) 455-8498 (outside USA)  
E: proteintech@ptglab.com  
W: ptglab.com

This product is exclusively available under Proteintech Group brand and is not available to purchase from any other manufacturer.

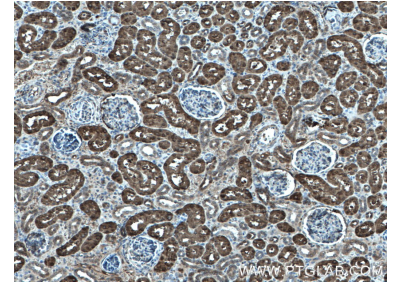
## Selected Validation Data



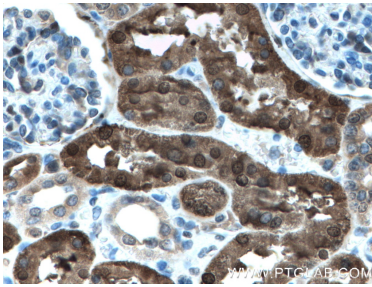
mouse kidney tissue were subjected to SDS PAGE followed by western blot with 27891-1-AP (PBLD antibody) at dilution of 1:2500 incubated at room temperature for 1.5 hours.



mouse liver tissue were subjected to SDS PAGE followed by western blot with 27891-1-AP (PBLD antibody) at dilution of 1:2500 incubated at room temperature for 1.5 hours.



Immunohistochemical analysis of paraffin-embedded human kidney tissue slide using 27891-1-AP (PBLD antibody) at dilution of 1:600 (under 10x lens. Heat mediated antigen retrieval with Tris-EDTA buffer (pH 9.0).



Immunohistochemical analysis of paraffin-embedded human kidney tissue slide using 27891-1-AP (PBLD antibody) at dilution of 1:600 (under 40x lens. Heat mediated antigen retrieval with Tris-EDTA buffer (pH 9.0).