

For Research Use Only

TRIB1 Polyclonal antibody, PBS Only

Catalog Number: 27899-1-PBS



Basic Information

Catalog Number: 27899-1-PBS	GenBank Accession Number: BC063292	Purification Method: Antigen affinity purification
Size: 100ug , Concentration: 1 mg/ml by Nanodrop;	GeneID (NCBI): 10221	
Source: Rabbit	UNIPROT ID: Q96RU8	
Isotype: IgG	Full Name: tribbles homolog 1 (Drosophila)	
Immunogen Catalog Number: AG27541	Calculated MW: 372 aa, 41 kDa	
	Observed MW: 41 kDa	

Applications

Tested Applications:
WB, IHC, Indirect ELISA

Species Specificity:
human

Background Information

TRIB1, a pseudokinase encoded by the tribbles homolog 1 gene, regulates hepatic lipogenesis and lipid metabolism by modulating C/EBP α degradation, thereby influencing plasma lipid profiles and atherosclerotic risk. It is expressed in macrophages and vascular smooth muscle cells, linking metabolic and inflammatory pathways in cardiometabolic disorders (PMID: 26517927, PMID: 40331689).

Storage

Storage:
Store at -80°C.
Storage Buffer:
PBS only, pH7.3

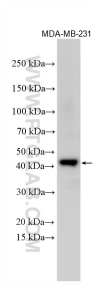
For technical support and original validation data for this product please contact:

T: 1 (888) 4PTGLAB (1-888-478-4522) (toll free in USA), or 1(312) 455-8498 (outside USA)

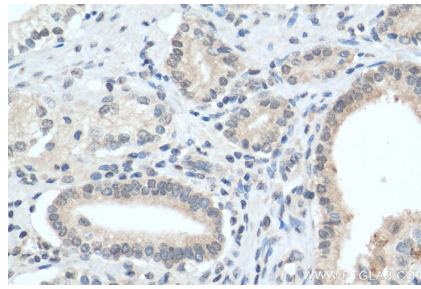
E: proteintech@ptglab.com
W: ptglab.com

This product is exclusively available under Proteintech Group brand and is not available to purchase from any other manufacturer.

Selected Validation Data



MDA-MB-231 cells were subjected to SDS PAGE followed by western blot with 27899-1-AP (TRIB1 antibody) at dilution of 1:4000 incubated at room temperature for 1.5 hours. This data was developed using the same antibody clone with 27899-1-PBS in a different storage buffer formulation.



Immunohistochemical analysis of paraffin-embedded human prostate cancer tissue slide using 27899-1-AP (TRIB1 antibody) at dilution of 1:200 (under 40x lens). Heat mediated antigen retrieval with Tris-EDTA buffer (pH 9.0). This data was developed using the same antibody clone with 27899-1-PBS in a different storage buffer formulation.