

For Research Use Only

BORG5/CDC42EP1 Polyclonal antibody, PBS Only



Catalog Number: 27904-1-PBS

Featured Product

Basic Information

Catalog Number:

27904-1-PBS

Size:

100ug , Concentration: 1 mg/ml by
Nanodrop;

Source:

Rabbit

Isotype:

IgG

Immunogen Catalog Number:

AG27396

GenBank Accession Number:

BC009356

GeneID (NCBI):

11135

UNIPROT ID:

Q00587

Full Name:

CDC42 effector protein (Rho GTPase
binding) 1

Calculated MW:

40 kDa

Observed MW:

55 kDa

Purification Method:

Antigen affinity purification

Applications

Tested Applications:

WB, Indirect ELISA

Species Specificity:

human

Background Information

CDC42EP1, also known as BORG5, is a CDC42 binding protein that mediates actin cytoskeleton reorganization at the plasma membrane. This protein is secreted and is primarily found in bone marrow. BORG5 was discovered as a 55 kDa protein, but the accepted reference protein is only 40.3 kDa.

Storage

Storage:

Store at -80°C.

Storage Buffer:

PBS Only

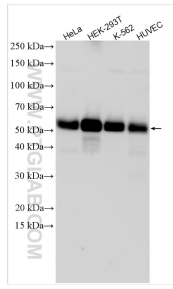
For technical support and original validation data for this product please contact:

T: 1 (888) 4PTGLAB (1-888-478-4522) (toll free
in USA), or 1(312) 455-8498 (outside USA)

E: proteintech@ptglab.com
W: ptglab.com

This product is exclusively available under Proteintech Group brand and is not available to purchase from any other manufacturer.

Selected Validation Data



Various lysates were subjected to SDS PAGE followed by western blot with 27904-1-AP (BORG5/CDC42EP1 antibody) at dilution of 1:1000 incubated at room temperature for 1.5 hours. This data was developed using the same antibody clone with 27904-1-PBS in a different storage buffer formulation.