

For Research Use Only

# SH3TC2 Polyclonal antibody, PBS Only

Catalog Number: 27905-1-PBS



## Basic Information

<b>Catalog Number:</b> 27905-1-PBS	<b>GenBank Accession Number:</b> BC113879	<b>Purification Method:</b> Antigen affinity purification
<b>Size:</b> 100ug, Concentration: 1 mg/ml by Nanodrop;	<b>GeneID (NCBI):</b> 79628	
<b>Source:</b> Rabbit	<b>UNIPROT ID:</b> Q8TF17	
<b>Isotype:</b> IgG	<b>Full Name:</b> SH3 domain and tetratricopeptide repeats 2	
<b>Immunogen Catalog Number:</b> AG27352	<b>Calculated MW:</b> 1288 aa, 145 kDa	

## Applications

**Tested Applications:**  
IHC, IF/ICC, Indirect ELISA

**Species Specificity:**  
human

## Background Information

The SH3TC2 protein (also known as KIAA1985 protein) is an adaptor protein involved in myelin formation in the peripheral nervous system. This protein contains multiple functional domains, including the SH3 (Src homology 3) and TPR (tetratricopeptide repeat) domains, which mediate protein-protein interactions. It is highly expressed in Schwann cells and is crucial for maintaining the stability of myelin structure. Clinically, mutations in the SH3TC2 gene are associated with Charcot-Marie-Tooth disease type 4C (CMT4C), an autosomal recessive peripheral neuropathy characterized by progressive demyelination of motor and sensory nerves, limb weakness, and loss of sensation. Studies have shown that the absence or dysfunction of SH3TC2 protein can lead to disordered signaling pathways in Schwann cells (such as Rab11-mediated membrane transport defects), affecting myelin development and repair.

## Storage

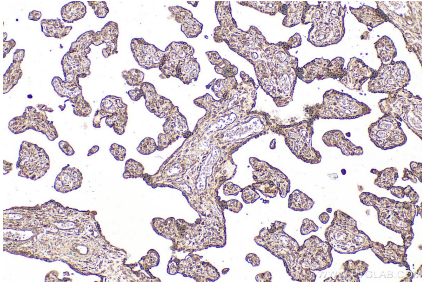
**Storage:**  
Store at -80°C.

**Storage Buffer:**  
PBS only, pH7.3

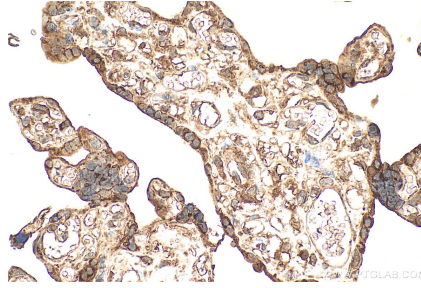
For technical support and original validation data for this product please contact:  
T: 1 (888) 4PTGLAB (1-888-478-4522) (toll free in USA), or 1(312) 455-8498 (outside USA)      E: [proteintech@ptglab.com](mailto:proteintech@ptglab.com)      W: [ptglab.com](http://ptglab.com)

**This product is exclusively available under Proteintech Group brand and is not available to purchase from any other manufacturer.**

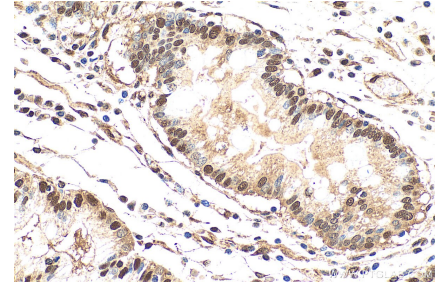
## Selected Validation Data



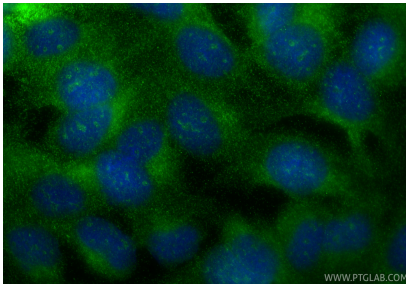
Immunohistochemical analysis of paraffin-embedded human placenta tissue slide using 27905-1-AP (SH3TC2 antibody) at dilution of 1:100 (under 10x lens). Heat mediated antigen retrieval with Tris-EDTA buffer (pH 9.0). This data was developed using the same antibody clone with 27905-1-PBS in a different storage buffer formulation.



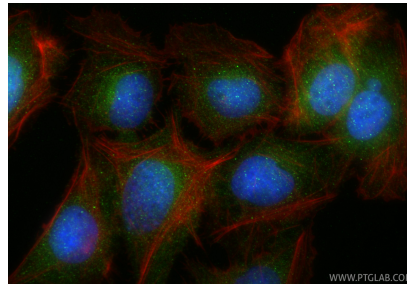
Immunohistochemical analysis of paraffin-embedded human placenta tissue slide using 27905-1-AP (SH3TC2 antibody) at dilution of 1:100 (under 40x lens). Heat mediated antigen retrieval with Tris-EDTA buffer (pH 9.0). This data was developed using the same antibody clone with 27905-1-PBS in a different storage buffer formulation.



Immunohistochemical analysis of paraffin-embedded human stomach cancer tissue slide using 27905-1-AP (SH3TC2 antibody) at dilution of 1:100 (under 40x lens). Heat mediated antigen retrieval with Tris-EDTA buffer (pH 9.0). This data was developed using the same antibody clone with 27905-1-PBS in a different storage buffer formulation.



Immunofluorescent analysis of (-20°C Ethanol) fixed U2OS cells using SH3TC2 antibody (27905-1-AP) at dilution of 1:200 and CoraLite®488-Conjugated Goat Anti-Rabbit IgG(H+L) (SA00013-2). This data was developed using the same antibody clone with 27905-1-PBS in a different storage buffer formulation.



Immunofluorescent analysis of (4% PFA) fixed U2OS cells using SH3TC2 antibody (27905-1-AP) at dilution of 1:400 and CoraLite®488-Conjugated Goat Anti-Rabbit IgG(H+L) (SA00013-2), CL594-phalloidin (red). This data was developed using the same antibody clone with 27905-1-PBS in a different storage buffer formulation.