

For Research Use Only

# CYFIP1 Polyclonal antibody

Catalog Number: 27925-1-AP



## Basic Information

<b>Catalog Number:</b> 27925-1-AP	<b>GenBank Accession Number:</b> BC005097	<b>Purification Method:</b> Antigen affinity purification
<b>Size:</b> 150ul , Concentration: 500 ug/ml by Nanodrop;	<b>GeneID (NCBI):</b> 23191	<b>Recommended Dilutions:</b> WB 1:500-1:3000 IF/ICC 1:50-1:500
<b>Source:</b> Rabbit	<b>UNIPROT ID:</b> Q7L576	
<b>Isotype:</b> IgG	<b>Full Name:</b> cytoplasmic FMR1 interacting protein 1	
<b>Immunogen Catalog Number:</b> AG27419	<b>Calculated MW:</b> 1253 aa, 145 kDa	
	<b>Observed MW:</b> 140-145 kDa	

## Applications

<b>Tested Applications:</b> WB, IF/ICC, ELISA	<b>Positive Controls:</b>
<b>Species Specificity:</b> Human, mouse, rat	<b>WB :</b> mouse brain tissue, rat brain tissue <b>IF/ICC :</b> HeLa cells,

## Background Information

CYFIP1 is a protein that regulates cytoskeletal dynamics and protein translation. The encoded protein is a component of the WAVE regulatory complex (WRC), which promotes actin polymerization. This protein also interacts with the synaptic functional regulator FMR1 protein and translation initiation factor 4E to inhibit protein translation. A large chromosomal deletion including this gene is associated with increased risk of schizophrenia and epilepsy in human patients. Reduced expression of this gene has been observed in various human cancers and the encoded protein may inhibit tumor invasion.

## Storage

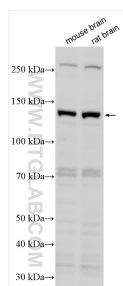
**Storage:**  
Store at -20°C. Stable for one year after shipment.  
**Storage Buffer:**  
PBS with 0.02% sodium azide and 50% glycerol pH 7.3.  
Aliquoting is unnecessary for -20°C storage

\*\*\* 20ul sizes contain 0.1% BSA

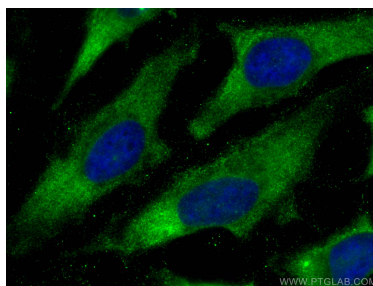
For technical support and original validation data for this product please contact:  
T: 1 (888) 4PTGLAB (1-888-478-4522) (toll free in USA), or 1(312) 455-8498 (outside USA)  
E: [proteintech@ptglab.com](mailto:proteintech@ptglab.com)  
W: [ptglab.com](http://ptglab.com)

This product is exclusively available under Proteintech Group brand and is not available to purchase from any other manufacturer.

## Selected Validation Data



Various lysates were subjected to SDS PAGE followed by western blot with 27925-1-AP (CYFIP1 antibody) at dilution of 1:1500 incubated at room temperature for 1.5 hours.



Immunofluorescent analysis of (-20°C Ethanol) fixed HeLa cells using CYFIP1 antibody (27925-1-AP) at dilution of 1:200 and CoraLite® 488-Conjugated AffiniPure Goat Anti-Rabbit IgG(H+L).