

For Research Use Only

SLC10A6 Polyclonal antibody

Catalog Number: 27938-1-AP



Basic Information

Catalog Number: 27938-1-AP	GenBank Accession Number: BC107051	Purification Method: Antigen affinity purification
Size: 150ul , Concentration: 650 ug/ml by Nanodrop and 400 ug/ml by Bradford method using BSA as the standard;	GeneID (NCBI): 345274	Recommended Dilutions: WB 1:500-1:2000 IHC 1:200-1:800
Source: Rabbit	UNIPROT ID: Q3KNW5	
Isotype: IgG	Full Name: solute carrier family 10 (sodium/bile acid cotransporter family), member 6	
Immunogen Catalog Number: AG16609	Calculated MW: 377 aa, 41 kDa	
	Observed MW: 70 kDa	

Applications

Tested Applications: WB, IHC, ELISA	Positive Controls:
Species Specificity: Human, Mouse	WB : mouse liver tissue,
Note-IHC: suggested antigen retrieval with TE buffer pH 9.0; (*) Alternatively, antigen retrieval may be performed with citrate buffer pH 6.0	IHC : mouse heart tissue, human stomach cancer tissue

Background Information

SLC10A6, also named as SOAT, belongs to the SLC10 sodium-dependent bile acid (BA) transporter family. SLC10A6 is a transporter of steroid sulfates associated with spermatogenesis and fertility. It has been shown that SLC10A6 might be a new anti-proliferative breast cancer target as the SLC10A6 inhibition can affect the proliferation of breast cancer cells. SLC10A6 also plays a key role in hepatic inflammation. 27938-1-AP antibody detects the 70 kDa glycosylated form in SDS-PAGE. (PMID: 26510996, 30186172, 28893621)

Storage

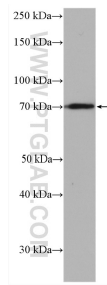
Storage:
Store at -20°C. Stable for one year after shipment.
Storage Buffer:
PBS with 0.02% sodium azide and 50% glycerol pH 7.3.
Aliquoting is unnecessary for -20°C storage

*** 20ul sizes contain 0.1% BSA

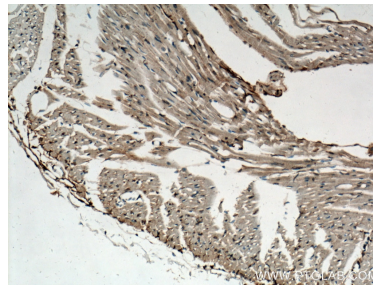
For technical support and original validation data for this product please contact:
T: 1 (888) 4PTGLAB (1-888-478-4522) (toll free in USA), or 1(312) 455-8498 (outside USA)
E: proteintech@ptglab.com
W: ptglab.com

This product is exclusively available under Proteintech Group brand and is not available to purchase from any other manufacturer.

Selected Validation Data



mouse liver tissue were subjected to SDS PAGE followed by western blot with 27938-1-AP (SLC10A6 antibody) at dilution of 1:1000 incubated at room temperature for 1.5 hours.



Immunohistochemical analysis of paraffin-embedded mouse heart tissue slide using 27938-1-AP (SLC10A6 antibody) at dilution of 1:400 (under 10x lens. Heat mediated antigen retrieval with Tris-EDTA buffer (pH 9.0).