

For Research Use Only

PHLDB2 Polyclonal antibody, PBS Only

Catalog Number: 27940-1-PBS



Basic Information

Catalog Number: 27940-1-PBS	GenBank Accession Number: BC142678	Purification Method: Antigen affinity purification
Size: 100ug, Concentration: 1 mg/ml by Nanodrop;	GeneID (NCBI): 90102	
Source: Rabbit	UNIPROT ID: Q865Q0	
Isotype: IgG	Full Name: pleckstrin homology-like domain, family B, member 2	
Immunogen Catalog Number: AG27331	Calculated MW: 1253 aa, 142 kDa	
	Observed MW: 150 kDa	

Applications

Tested Applications:
WB, IHC, Indirect ELISA

Species Specificity:
human, mouse

Background Information

The pleckstrin homology-like domain (PHLD) class of proteins are multifunctional proteins comprised of two families of proteins, PHLDA and PHLDB, each with 3 members: PHLDA1, PHLDA2, PHDLA3, PHLDB1, PHLDB2, and PHLDB3 (PMID: 32429563). All the family members possess a pleckstrin homology (PH) domain. PHLB2, also known as LL5-beta, contains two predicted coiled-coil domains, a serine-rich region predicted to contain multiple protein kinase C phosphorylation sites in addition to a PH domain (PMID: 15851520). PHLB2 is a filamin-binding protein that is an effector of the PI3K signaling pathway (PMID: 17174070). It is a PtdIns(3,4,5)P₃ (PIP₃) binding protein and can translocate to the plasma membrane in a receptor and PI3K-dependant manner (PMID: 12376540). PHLB2 has also been reported as a component of the postsynaptic apparatus and a regulator of postsynaptic differentiation (PMID: 15851520).

Storage

Storage:
Store at -80°C.

Storage Buffer:
PBS Only

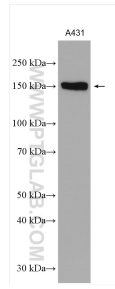
For technical support and original validation data for this product please contact:

T: 1 (888) 4PTGLAB (1-888-478-4522) (toll free in USA), or 1(312) 455-8498 (outside USA)

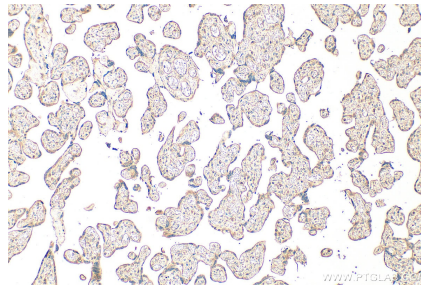
E: proteintech@ptglab.com
W: ptglab.com

This product is exclusively available under Proteintech Group brand and is not available to purchase from any other manufacturer.

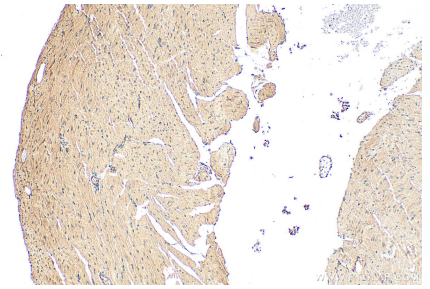
Selected Validation Data



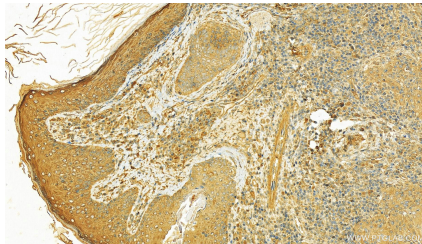
A431 cells were subjected to SDS PAGE followed by western blot with 27940-1-AP (PHLDB2 antibody) at dilution of 1:4000 incubated at room temperature for 1.5 hours. This data was developed using the same antibody clone with 27940-1-PBS in a different storage buffer formulation.



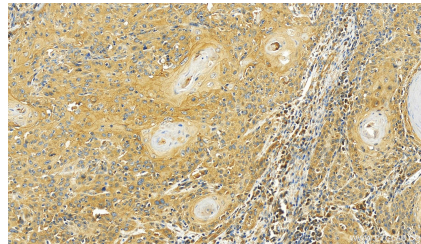
Immunohistochemical analysis of paraffin-embedded human placenta tissue slide using 27940-1-AP (PHLDB2 antibody) at dilution of 1:600 (under 10x lens). Heat mediated antigen retrieval with Tris-EDTA buffer (pH 9.0). This data was developed using the same antibody clone with 27940-1-PBS in a different storage buffer formulation.



Immunohistochemical analysis of paraffin-embedded mouse heart tissue slide using 27940-1-AP (PHLDB2 antibody) at dilution of 1:600 (under 10x lens). Heat mediated antigen retrieval with Tris-EDTA buffer (pH 9.0). This data was developed using the same antibody clone with 27940-1-PBS in a different storage buffer formulation.



Immunohistochemical analysis of paraffin-embedded skin cancer slide using 27940-1-AP (PHLDB2 antibody) at dilution of 1:800 (under 20x lens). Heat mediated antigen retrieval with Tris-EDTA buffer (pH 9.0). This data was developed using the same antibody clone with 27940-1-PBS in a different storage buffer formulation.



Immunohistochemical analysis of paraffin-embedded skin cancer slide using 27940-1-AP (PHLDB2 antibody) at dilution of 1:800 (under 20x lens). Heat mediated antigen retrieval with Tris-EDTA buffer (pH 9.0). This data was developed using the same antibody clone with 27940-1-PBS in a different storage buffer formulation.