

For Research Use Only

GPD1 Polyclonal antibody

Catalog Number: 27943-1-AP

Featured Product

2 Publications



Basic Information

Catalog Number:

27943-1-AP

Size:

150ul, Concentration: 550 ug/ml by Nanodrop and 333 ug/ml by Bradford method using BSA as the standard;

Source:

Rabbit

Isotype:

IgG

Immunogen Catalog Number:

AG27703

GenBank Accession Number:

BC032234

GeneID (NCBI):

2819

UNIPROT ID:

P21695

Full Name:

glycerol-3-phosphate dehydrogenase 1 (soluble)

Calculated MW:

349 aa, 38 kDa

Observed MW:

32-42 kDa

Purification Method:

Antigen affinity purification

Recommended Dilutions:

WB 1:500-1:2000

Applications

Tested Applications:

WB, ELISA

Cited Applications:

WB

Species Specificity:

Human, Mouse, Rat

Cited Species:

human, mouse

Positive Controls:

WB: rat liver tissue, mouse liver tissue

Notable Publications

Author	Pubmed ID	Journal	Application
Yahui Wang	35973426	Mol Cell	WB
Cong-Hui Yao	37084714	Mol Cell	WB

Storage

Storage:

Store at -20°C. Stable for one year after shipment.

Storage Buffer:

PBS with 0.02% sodium azide and 50% glycerol pH 7.3.

Aliquoting is unnecessary for -20°C storage

*** 20ul sizes contain 0.1% BSA

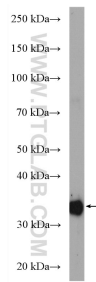
For technical support and original validation data for this product please contact:

T: 1 (888) 4PTGLAB (1-888-478-4522) (toll free in USA), or 1(312) 455-8498 (outside USA)

E: proteintech@ptglab.com
W: ptglab.com

This product is exclusively available under Proteintech Group brand and is not available to purchase from any other manufacturer.

Selected Validation Data



rat liver tissue were subjected to SDS PAGE followed by western blot with 27943-1-AP (GPD1 antibody) at dilution of 1:1000 incubated at room temperature for 1.5 hours.