

For Research Use Only

# DROSHA Polyclonal antibody, PBS Only

Catalog Number: 27958-1-PBS

Featured Product



## Basic Information

Catalog Number:

27958-1-PBS

Size:

100ug, Concentration: 1 mg/ml by Nanodrop;

Source:

Rabbit

Isotype:

IgG

Immunogen Catalog Number:

AG27533

GenBank Accession Number:

NM\_001100412

GeneID (NCBI):

29102

UNIPROT ID:

Q9NRR4

Full Name:

ribonuclease type III, nuclear

Calculated MW:

159 aa

Observed MW:

150 kDa

Purification Method:

Antigen affinity purification

## Applications

Tested Applications:

WB, IF/ICC, Indirect ELISA

Species Specificity:

human

## Background Information

DROSHA, also named as RN3, RNASE3L, P241 and RNASEN, is double-stranded (ds) RNA-specific endoribonuclease that is involved in the initial step of microRNA (miRNA) biogenesis. It is a component of the microprocessor complex that is required to process primary miRNA transcripts (pri-miRNAs) to release precursor miRNA (pre-miRNA) in the nucleus. Within the microprocessor complex, RNASEN/DROSHA cleaves the 3' and 5' strands of a stem-loop in pri-miRNAs (processing center 11 bp from the dsRNA-ssRNA junction) to release hairpin-shaped pre-miRNAs that are subsequently cut by the cytoplasmic DICER to generate mature miRNAs. RNASEN is involved also in pre-rRNA processing. Cleaves double-strand RNA and does not cleave single-strand RNA. And it is involved in the formation of GW bodies. The antibody is specific to DROSHA.

## Storage

Storage:

Store at -80°C.

Storage Buffer:

PBS only

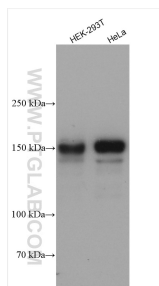
For technical support and original validation data for this product please contact:

T: 1 (888) 4PTGLAB (1-888-478-4522) (toll free in USA), or 1(312) 455-8498 (outside USA)

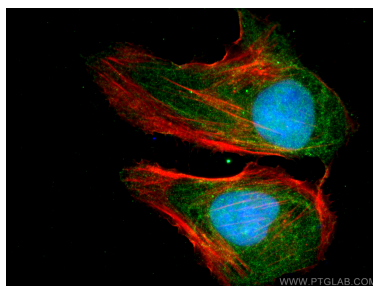
E: [proteintech@ptglab.com](mailto:proteintech@ptglab.com)  
W: [ptglab.com](http://ptglab.com)

This product is exclusively available under Proteintech Group brand and is not available to purchase from any other manufacturer.

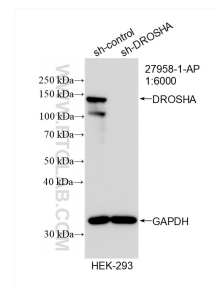
## Selected Validation Data



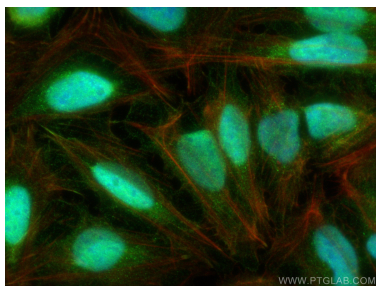
Various lysates were subjected to SDS PAGE followed by western blot with 27958-1-AP (DROSHA antibody) at dilution of 1:8000 incubated at room temperature for 1.5 hours. This data was developed using the same antibody clone with 27958-1-PBS in a different storage buffer formulation.



Immunofluorescent analysis of (4% PFA) fixed U2OS cells using DROSHA antibody (27958-1-AP) at dilution of 1:200 and CoraLite®488-Conjugated AffiniPure Goat Anti-Rabbit IgG(H+L), CL594-Phalloidin (red). This data was developed using the same antibody clone with 27958-1-PBS in a different storage buffer formulation.



WB result of DROSHA antibody (27958-1-AP; 1:6000; incubated at room temperature for 1.5 hours) with sh-Control and sh-DROSHA transfected HEK-293 cells. This data was developed using the same antibody clone with 27958-1-PBS in a different storage buffer formulation.



Immunofluorescent analysis of (4% PFA) fixed U2OS cells using DROSHA antibody (27958-1-AP) at dilution of 1:400 and CoraLite®488-Conjugated AffiniPure Goat Anti-Rabbit IgG(H+L), CL594-Phalloidin (red). This data was developed using the same antibody clone with 27958-1-PBS in a different storage buffer formulation.