

For Research Use Only

C1orf2 Polyclonal antibody

Catalog Number: 27969-1-AP



Basic Information

Catalog Number:

27969-1-AP

Size:

150ul, Concentration: 230 ug/ml by Nanodrop;

Source:

Rabbit

Isotype:

IgG

Immunogen Catalog Number:

AG27428

GenBank Accession Number:

BC006493

GeneID (NCBI):

10712

UNIPROT ID:

P81408

Full Name:

chromosome 1 open reading frame 2

Calculated MW:

669 aa, 71 kDa

Observed MW:

69-71 kDa

Purification Method:

Antigen affinity purification

Recommended Dilutions:

WB 1:500-1:1000

Applications

Tested Applications:

WB, ELISA

Species Specificity:

human

Positive Controls:

WB : HeLa cells, Jurkat cells, PC-3 cells

Background Information

C1orf2 is also named COTE1, FAM189B and ENTREP3. C1orf2 is identified as a potential binding partner of a WW domain-containing protein which is involved in apoptosis and tumor suppression. Alternative splicing results in multiple transcript variants. COTE1 contributes to human hepatocarcinogenesis by regulating cell proliferation through the modulation of WWOX signaling, and it upregulated in hepatocellular carcinoma specimens and HCC cell lines (PMID: 23317259, PMID: 24899407).

Storage

Storage:

Store at -20°C. Stable for one year after shipment.

Storage Buffer:

PBS with 0.02% sodium azide and 50% glycerol pH 7.3.

Aliquoting is unnecessary for -20°C storage

*** 20ul sizes contain 0.1% BSA

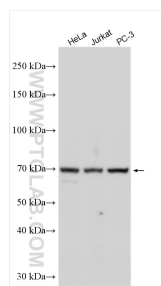
For technical support and original validation data for this product please contact:

T: 1 (888) 4PTGLAB (1-888-478-4522) (toll free in USA), or 1(312) 455-8498 (outside USA)

E: proteintech@ptglab.com
W: ptglab.com

This product is exclusively available under Proteintech Group brand and is not available to purchase from any other manufacturer.

Selected Validation Data



Various lysates were subjected to SDS PAGE followed by western blot with 27969-1-AP (C1orf2 antibody) at dilution of 1:500 incubated at room temperature for 1.5 hours.