

For Research Use Only

PPP1R17 Polyclonal antibody, PBS Only

Catalog Number: 27976-1-PBS



Basic Information

Catalog Number: 27976-1-PBS	GenBank Accession Number: BC028094	Purification Method: Antigen affinity purification
Size: 100ug, Concentration: 1 mg/ml by Nanodrop;	GeneID (NCBI): 10842	
Source: Rabbit	UNIPROT ID: O96001	
Isotype: IgG	Full Name: chromosome 7 open reading frame 16	
Immunogen Catalog Number: AG15187	Calculated MW: 155 aa, 18 kDa	
	Observed MW: 20-30 kDa	

Applications

Tested Applications:
WB, IHC, IF/ICC, Indirect ELISA

Species Specificity:
human, mouse, rat

Background Information

PPP1R17, an endogenous substrate for cGMP-dependent protein kinase, exists almost exclusively in cerebellar Purkinje cells, where it is possibly involved in the induction of long-term depression (PMID: 10051666). PPP1R17 inhibits phosphatase activities of protein phosphatase 1 (PP1) and protein phosphatase 2A (PP2A) complexes. Allelic variants increase susceptibility to hypercholesterolemia (PMID: 12955585).

Storage

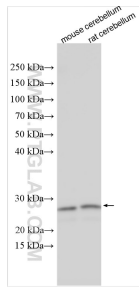
Storage:
Store at -80°C.

Storage Buffer:
PBS only, pH7.3

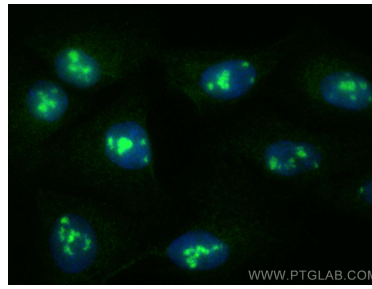
For technical support and original validation data for this product please contact:
T: 1 (888) 4PTGLAB (1-888-478-4522) (toll free in USA), or 1(312) 455-8498 (outside USA) E: proteintech@ptglab.com
W: ptglab.com

This product is exclusively available under Proteintech Group brand and is not available to purchase from any other manufacturer.

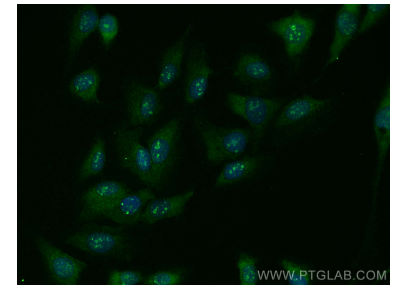
Selected Validation Data



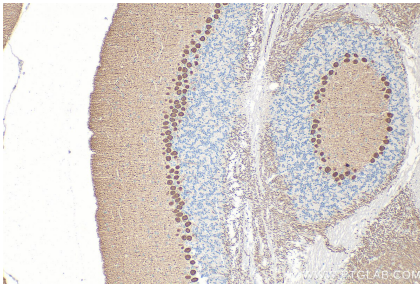
Various lysates were subjected to SDS PAGE followed by western blot with 27976-1-AP (C7orf16 antibody) at dilution of 1:10000 incubated at room temperature for 1.5 hours. This data was developed using the same antibody clone with 27976-1-PBS in a different storage buffer formulation.



Immunofluorescent analysis of (4% PFA) fixed U2OS cells using PPP1R17 antibody (27976-1-AP) at dilution of 1:400 and CoraLite®488-Conjugated AffiniPure Goat Anti-Rabbit IgG(H+L). This data was developed using the same antibody clone with 27976-1-PBS in a different storage buffer formulation.



Immunofluorescent analysis of (-20°C Methanol) fixed U2OS cells using PPP1R17 antibody (27976-1-AP) at dilution of 1:400 and CoraLite®488-Conjugated AffiniPure Goat Anti-Rabbit IgG(H+L). This data was developed using the same antibody clone with 27976-1-PBS in a different storage buffer formulation.



Immunohistochemical analysis of paraffin-embedded mouse cerebellum tissue slide using 27976-1-AP (PPP1R17 antibody) at dilution of 1:200 (under 10x lens). Heat mediated antigen retrieval with Tris-EDTA buffer (pH 9.0). This data was developed using the same antibody clone with 27976-1-PBS in a different storage buffer formulation.