

For Research Use Only

SPEF2 Polyclonal antibody

Catalog Number: 27989-1-AP



Basic Information

Catalog Number:

27989-1-AP

Size:

150ul , Concentration: 380 ug/ml by Nanodrop;

Source:

Rabbit

Isotype:

IgG

Immunogen Catalog Number:

AG27506

GenBank Accession Number:

NM_024867

GeneID (NCBI):

79925

UNIPROT ID:

Q9C093

Full Name:

sperm flagellar 2

Calculated MW:

210 kDa

Observed MW:

210 kDa

Purification Method:

Antigen affinity purification

Recommended Dilutions:

WB: 1:500-1:1000

IP: 0.5-4.0 ug for 1.0-3.0 mg of total protein lysate

IF-P: 1:200-1:800

Applications

Tested Applications:

WB, IF-P, IP, ELISA

Species Specificity:

human, mouse, rat

Positive Controls:

WB : rat testis tissue,

IP : rat testis tissue,

IF-P : mouse testis tissue,

Background Information

Sperm flagellar protein 2 (SPEF2) is also named KPL2. As a cilia-associated protein, SPEF2 is broadly expressed in various cilia-related organs, such as the lung, spleen, trachea, brain, and testis (PMID: 10100999). SPEF2 is known to be essential for sperm tail development (PMID: 28619825). During spermatogenesis, SPEF2 is weakly expressed in cytoplasm in pachytene spermatocytes and round spermatocytes, then SPEF2 is localized in the manchette of steps 10-12 elongating spermatids, in the basal body at steps 13-14, and finally in the midpiece of the sperm tail at steps 14-16 (PMID: 19889948). Spef2 is expressed in the bone and cartilage, and Spef2 expression in osteoblasts increases during in vitro differentiation (PMID: 29339787).

Storage

Storage:

Store at -20°C. Stable for one year after shipment.

Storage Buffer:

PBS with 0.02% sodium azide and 50% glycerol, pH7.3

Aliquoting is unnecessary for -20°C storage

*** 20ul sizes contain 0.1% BSA

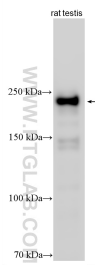
For technical support and original validation data for this product please contact:

T: 1 (888) 4PTGLAB (1-888-478-4522) (toll free in USA), or 1(312) 455-8498 (outside USA)

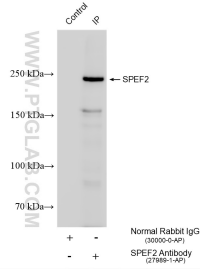
E: proteintech@ptglab.com
W: ptglab.com

This product is exclusively available under Proteintech Group brand and is not available to purchase from any other manufacturer.

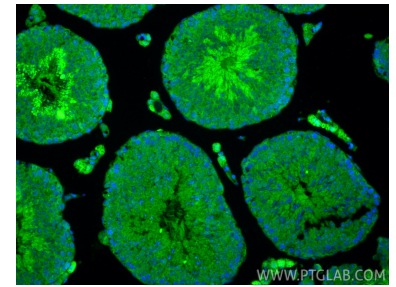
Selected Validation Data



Rat testis tissue lysates were subjected to SDS PAGE followed by western blot with 27989-1-AP (SPEF2 antibody) at dilution of 1:500 incubated at room temperature for 1.5 hours.



IP result of anti-SPEF2 (IP:27989-1-AP, 4ug; Detection:27989-1-AP 1:1000) with rat testis tissue lysate 1800 ug.



Immunofluorescent analysis of (4% PFA) fixed paraffin-embedded mouse testis tissue using SPEF2 antibody (27989-1-AP) at dilution of 1:400 and CoraLite®488-Conjugated Goat Anti-Rabbit IgG(H+L) (SA00013-2). Heat mediated antigen retrieval with Tris-EDTA buffer (pH 9.0).