

For Research Use Only

# MAGT1 Polyclonal antibody

Catalog Number: 27994-1-AP

1 Publications



## Basic Information

### Catalog Number:

27994-1-AP

### Size:

150ul, Concentration: 500 ug/ml by Nanodrop and 333 ug/ml by Bradford method using BSA as the standard;

### Source:

Rabbit

### Isotype:

IgG

### Immunogen Catalog Number:

AG27416

### GenBank Accession Number:

BC060842

### GeneID (NCBI):

84061

### UNIPROT ID:

Q9H0U3

### Full Name:

magnesium transporter 1

### Calculated MW:

335 aa, 38 kDa

### Observed MW:

45-50 kDa

### Purification Method:

Antigen affinity purification

### Recommended Dilutions:

WB 1:500-1:1000

## Applications

### Tested Applications:

WB, ELISA

### Cited Applications:

WB

### Species Specificity:

Human, Mouse, Rat

### Cited Species:

human, mouse

### Positive Controls:

WB : mouse brain tissue, NIH/3T3 cells, HuH-7 cells, rat brain tissue

## Background Information

MAGT1 is a mammalian Mg<sup>2+</sup>-selective transporter being required for cellular magnesium uptake and vertebrate embryonic development. It possesses five putative transmembrane (TM) regions with a cleavage site, a N-glycosylation site, and a number of phosphorylation sites. Recently mutations in MAGT1 has been found to be associated with a novel X-linked human immunodeficiency. The MAGT1 protein was undetectable in the patients' cells by western blot or immunofluorescent cell surface staining (Nature 475, 471-6). 27994-1-AP antibody detects the glycosylated protein around 45-50 kDa in SDS-PAGE. (PMID: 28720733, 27383987)

## Notable Publications

Author	Pubmed ID	Journal	Application
Lin Li	35796007	Int J Mol Med	WB

## Storage

### Storage:

Store at -20°C. Stable for one year after shipment.

### Storage Buffer:

PBS with 0.02% sodium azide and 50% glycerol pH 7.3.

Aliquoting is unnecessary for -20°C storage

\*\*\* 20ul sizes contain 0.1% BSA

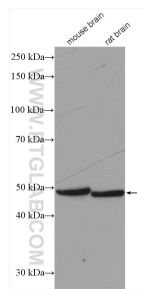
For technical support and original validation data for this product please contact:

T: 1 (888) 4PTGLAB (1-888-478-4522) (toll free in USA), or 1(312) 455-8498 (outside USA)

E: [proteintech@ptglab.com](mailto:proteintech@ptglab.com)  
W: [ptglab.com](http://ptglab.com)

This product is exclusively available under Proteintech Group brand and is not available to purchase from any other manufacturer.

## Selected Validation Data



Various lysates were subjected to SDS PAGE followed by western blot with 27994-1-AP (MACT1 antibody) at dilution of 1:600 incubated at room temperature for 1.5 hours.