

For Research Use Only

SPESP1 Polyclonal antibody

Catalog Number: 28010-1-AP

1 Publications



Basic Information

Catalog Number:

28010-1-AP

Size:

150ul, Concentration: 1000 ug/ml by Nanodrop and 600 ug/ml by Bradford method using BSA as the standard;

Source:

Rabbit

Isotype:

IgG

Immunogen Catalog Number:

AG27764

GenBank Accession Number:

BC017998

GeneID (NCBI):

246777

UNIPROT ID:

Q6UW49

Full Name:

sperm equatorial segment protein 1

Calculated MW:

39 kDa

Observed MW:

67 kDa, 77 kDa

Purification Method:

Antigen affinity purification

Recommended Dilutions:

WB 1:500-1:2000

Applications

Tested Applications:

WB, ELISA

Cited Applications:

WB, IF

Species Specificity:

Human, mouse, rat

Cited Species:

human, mouse

Positive Controls:

WB : mouse testis tissue, rat testis tissue

Notable Publications

Author	Pubmed ID	Journal	Application
Yun Zhong	38764260	Clin Transl Med	WB,IF

Storage

Storage:

Store at -20°C. Stable for one year after shipment.

Storage Buffer:

PBS with 0.02% sodium azide and 50% glycerol pH 7.3.

Aliquoting is unnecessary for -20°C storage

*** 20ul sizes contain 0.1% BSA

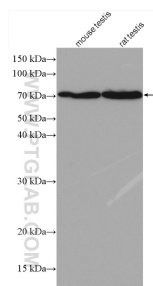
For technical support and original validation data for this product please contact:

T: 1 (888) 4PTGLAB (1-888-478-4522) (toll free in USA), or 1(312) 455-8498 (outside USA)

E: proteintech@ptglab.com
W: ptglab.com

This product is exclusively available under Proteintech Group brand and is not available to purchase from any other manufacturer.

Selected Validation Data



Various lysates were subjected to SDS PAGE followed by western blot with 28010-1-AP (SPESP1 antibody) at dilution of 1:1000 incubated at room temperature for 1.5 hours.