

For Research Use Only

ZFPM1 Polyclonal antibody

Catalog Number: 28012-1-AP



Basic Information

Catalog Number: 28012-1-AP	GenBank Accession Number: NM_153813	Purification Method: Antigen affinity purification
Size: 150ul , Concentration: 1000 µg/ml by Nanodrop;	GeneID (NCBI): 161882	Recommended Dilutions: WB 1:500-1:1000 IHC 1:50-1:500
Source: Rabbit	Full Name: zinc finger protein, multitype 1	
Isotype: IgG	Calculated MW: 105 aa	
Immunogen Catalog Number: AG27829	Observed MW: 105 kDa	

Applications

Tested Applications: IHC, WB, ELISA	Positive Controls:
Species Specificity: Human, mouse, rat	WB : mouse liver tissue, rat liver tissue IHC : human prostate cancer tissue,

Note-IHC: suggested antigen retrieval with TE buffer pH 9.0; (*) Alternatively, antigen retrieval may be performed with citrate buffer pH 6.0

Background Information

ZFPM1 (Zinc Finger Protein, FOG Family Member 1, previous known as FOG1) is a protein with nine zinc finger domains, the C2HC type zinc fingers on ZFPM1 protein are responsible for mediating the interaction with the N-finger of GATA factors (PMID:10329627). ZFPM1 also contains two domains that are known to recruit transcriptional regulatory complexes. The one located at the extreme N-terminus is essential to recruit the nucleosome remodeling and histone deacetylase (NuRD) complex, another one between zinc fingers 6 and 7 could bind to CtBP co-repressor (PMID:30611731).

Storage

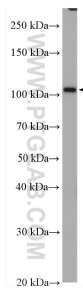
Storage:
Store at -20°C. Stable for one year after shipment.
Storage Buffer:
PBS with 0.02% sodium azide and 50% glycerol pH 7.3.
Aliquoting is unnecessary for -20°C storage

*** 20ul sizes contain 0.1% BSA

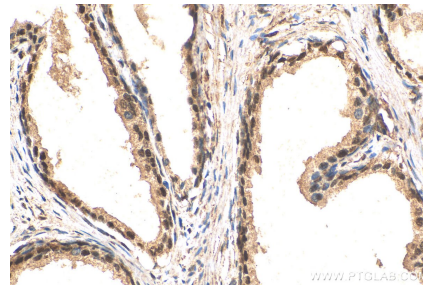
For technical support and original validation data for this product please contact:
T: 1 (888) 4PTGLAB (1-888-478-4522) (toll free in USA), or 1(312) 455-8498 (outside USA)
E: proteintech@ptglab.com
W: ptglab.com

This product is exclusively available under Proteintech Group brand and is not available to purchase from any other manufacturer.

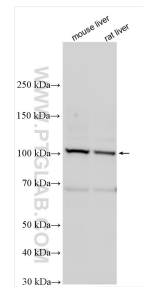
Selected Validation Data



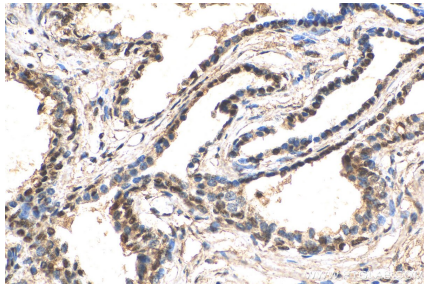
mouse liver tissue were subjected to SDS PAGE followed by western blot with 28012-1-AP (ZFPM1 antibody) at dilution of 1:600 incubated at room temperature for 1.5 hours.



Immunohistochemical analysis of paraffin-embedded human prostate cancer tissue slide using 28012-1-AP (ZFPM1 antibody) at dilution of 1:200 (under 40x lens). Heat mediated antigen retrieval with Tris-EDTA buffer (pH 9.0).



Various lysates were subjected to SDS PAGE followed by western blot with 28012-1-AP (ZFPM1 antibody) at dilution of 1:1000 incubated at room temperature for 1.5 hours.



Immunohistochemical analysis of paraffin-embedded human prostate cancer tissue slide using 28012-1-AP (ZFPM1 antibody) at dilution of 1:200 (under 40x lens). Heat mediated antigen retrieval with Tris-EDTA buffer (pH 9.0).