

For Research Use Only

# CRB2 Polyclonal antibody

Catalog Number: 28015-1-AP



## Basic Information

<b>Catalog Number:</b> 28015-1-AP	<b>GenBank Accession Number:</b> NM_173689	<b>Purification Method:</b> Antigen affinity purification
<b>Size:</b> 150ul , Concentration: 400 ug/ml by Nanodrop;	<b>GeneID (NCBI):</b> 286204	<b>Recommended Dilutions:</b> IHC 1:50-1:500 IF-P 1:50-1:500
<b>Source:</b> Rabbit	<b>UNIPROT ID:</b> Q5IJ48	
<b>Isotype:</b> IgG	<b>Full Name:</b> crumbs homolog 2 (Drosophila)	
<b>Immunogen Catalog Number:</b> AG27826	<b>Calculated MW:</b> 134 aa	

## Applications

<b>Tested Applications:</b> IHC, IF-P, ELISA	<b>Positive Controls:</b>
<b>Species Specificity:</b> human, mouse	IHC : mouse brain tissue, IF-P : mouse eye tissue,
<b>Note-IHC: suggested antigen retrieval with TE buffer pH 9.0; (*) Alternatively, antigen retrieval may be performed with citrate buffer pH 6.0</b>	

## Background Information

CRB2 (Crumbs homolog-2) has a large extracellular domain with epidermal growth-factor-like and laminin-A globular domains, a single transmembrane domain, and an intracellular C-terminal domain of 37 amino acids (PMID: 31438467). CRB2 is a candidate modifying gene of human CRB1-related retinal dystrophy (PMID: 24565864).

## Storage

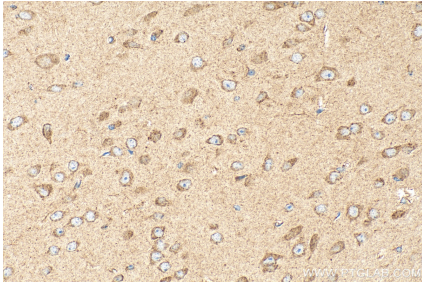
**Storage:**  
Store at -20°C. Stable for one year after shipment.  
**Storage Buffer:**  
PBS with 0.02% sodium azide and 50% glycerol pH 7.3.  
Aliquoting is unnecessary for -20°C storage

\*\*\* 20ul sizes contain 0.1% BSA

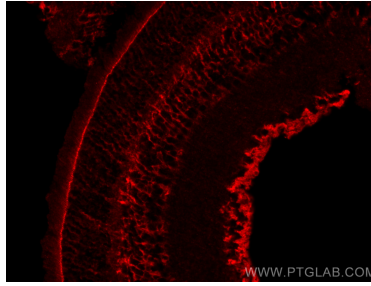
For technical support and original validation data for this product please contact:  
T: 1 (888) 4PTGLAB (1-888-478-4522) (toll free in USA), or 1(312) 455-8498 (outside USA)  
E: [proteintech@ptglab.com](mailto:proteintech@ptglab.com)  
W: [ptglab.com](http://ptglab.com)

This product is exclusively available under Proteintech Group brand and is not available to purchase from any other manufacturer.

## Selected Validation Data



Immunohistochemical analysis of paraffin-embedded mouse brain tissue slide using 28015-1-AP (CRB2 antibody) at dilution of 1:200 (under 40x lens). Heat mediated antigen retrieval with Tris-EDTA buffer (pH 9.0).



Immunofluorescent analysis of (4% PFA) fixed paraffin-embedded mouse eye tissue using CRB2 antibody (28015-1-AP) at dilution of 1:200 and CoraLite® 594-Conjugated Goat Anti-Rabbit IgG(H+L) (SA00013-4). Heat mediated antigen retrieval with Tris-EDTA buffer (pH 9.0).