

For Research Use Only

CLK3 Polyclonal antibody

Catalog Number: 28037-1-AP



Basic Information

Catalog Number: 28037-1-AP	GenBank Accession Number: BC002555	Purification Method: Antigen affinity purification
Size: 150ul , Concentration: 380 ug/ml by Nanodrop;	GeneID (NCBI): 1198	Recommended Dilutions: WB 1:5000-1:50000 IHC 1:500-1:2000
Source: Rabbit	UNIPROT ID: P49761	
Isotype: IgG	Full Name: CDC-like kinase 3	
Immunogen Catalog Number: AG27741	Calculated MW: 73 kDa	
	Observed MW: 56 kDa	

Applications

Tested Applications: WB, IHC, ELISA	Positive Controls:
Species Specificity: human, mouse	WB : Jurkat cells, MCF-7 cells, mouse testis tissue
Note-IHC: suggested antigen retrieval with TE buffer pH 9.0; (*) Alternatively, antigen retrieval may be performed with citrate buffer pH 6.0	IHC : human ovary cancer tissue,

Background Information

CLK3 (CDC Like Kinase 3) encodes a protein belonging to the serine/threonine type protein kinase family. This protein is a nuclear dual-specificity kinase that functions on substrates containing serine/threonine and tyrosine. CLK3 modulates RNA splicing by phosphorylating serine/arginine-rich proteins such as SRSF1 and SRSF3. CLK3 dysregulation was indicated to be a high-penetrant factor in different types of human tumors even though its functions in tumors were not clearly characterized (PMID: 32453420). CLK3 has 4 isoforms, which is 74kDa, 59kDa, 56kDa and 18kDa.

Storage

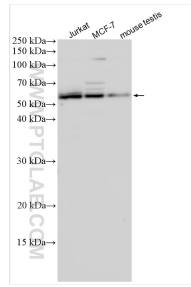
Storage:
Store at -20°C. Stable for one year after shipment.
Storage Buffer:
PBS with 0.02% sodium azide and 50% glycerol pH 7.3.
Aliquoting is unnecessary for -20°C storage

*** 20ul sizes contain 0.1% BSA

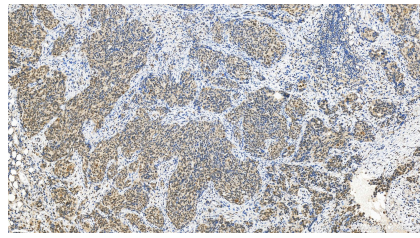
For technical support and original validation data for this product please contact:
T: 1 (888) 4PTGLAB (1-888-478-4522) (toll free in USA), or 1(312) 455-8498 (outside USA)
E: proteintech@ptglab.com
W: ptglab.com

This product is exclusively available under Proteintech Group brand and is not available to purchase from any other manufacturer.

Selected Validation Data



Various lysates were subjected to SDS PAGE followed by western blot with 28037-1-AP (CLK3 antibody) at dilution of 1:15000 incubated at room temperature for 1.5 hours.



Immunohistochemical analysis of paraffin-embedded human ovary cancer tissue slide using 28037-1-AP (CLK3 antibody) at dilution of 1:1000 (under 20x lens). Heat mediated antigen retrieval with Tris-EDTA buffer (pH 9.0).